

## **Historic, Archive Document**

Do not assume content reflects current scientific knowledge, policies, or practices.



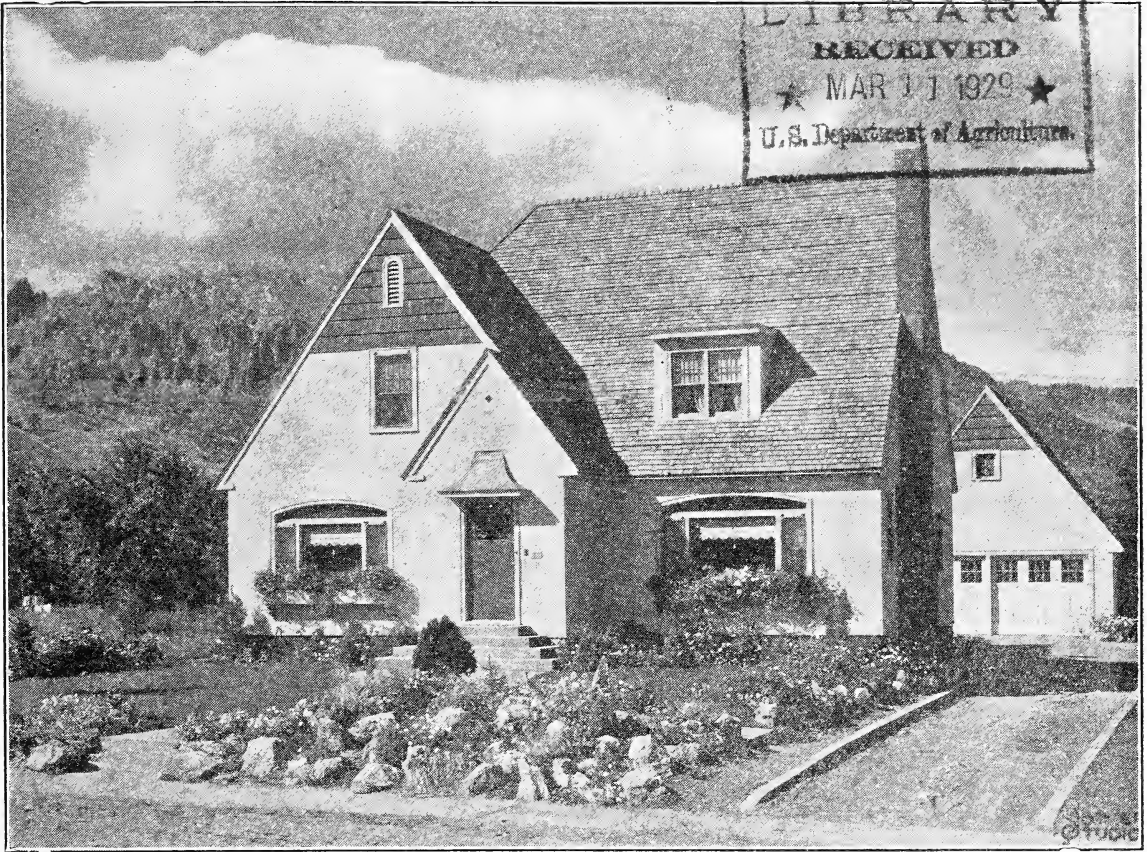
62,91

CATALOG NO. 11-1929

# Milot-Mills Co. Garden Book

## FLOWER *and* VEGETABLE SEEDS

Plants, Trees, Evergreens  
Ornamental Shrubs, Etc.



WENATCHEE HOME OF JOHN CAREY, HIGHLAND DRIVE, LANDSCAPED AND PLANTED BY US SPRING 1928

**Landscape Department**  
**Lawns, Rockeries, Pool and General Planting**  
**a Specialty**

Greenhouses and Gardens, 605-619 Okanogan Ave.  
 Seed Store, 22 No. Wenatchee Ave.  
 Wenatchee, Washington

# CASH BARGAIN COLLECTIONS

Mention number of collection when ordering. Not more than two collections of one number to a customer. Cash must accompany order.

## COLLECTION NO. 1.

### BARGAIN COLLECTION OF DAHLIAS

SIX named Giant Flowered Dahlias, our choice. Value over \$3.50, for..... **1.65**  
 TWELVE named Giant Dahlias, our choice, value over \$6.00 for..... **3.25**

## COLLECTION NO. 2.

### SIX HARDY ROSE BUSHES

SIX named varieties, good selection of colors. Sure to grow. Value \$3.75. Delivered to you for..... **2.25**

## COLLECTION NO. 3.

### SIX BEAUTIFUL SHRUBS

THIS collection contains one each of Golden Bell, Hydrangea, Mock Orange, Bridal Wreath, Snowball and Weigela. Value \$4.05. Delivered for..... **3.00**

## COLLECTION NO. 4.

### BARGAIN COLLECTION OF CANNAS

TWELVE CANNAS, two each. Value \$2.00. Delivered to you for..... **1.50**  
 SIX BEST NAMED VARIETIES. Value \$1.00. Delivered to you for..... **.85**

## COLLECTION NO. 5.

### ONE ROSE BUSH

SIX hardy Phlox, six hardy Carnations, four Cannas, value \$1.70. Del. to you for... **1.00**

## COLLECTION NO. 6.

### COLLECTION OF GLADIOLAS

100 choice gladiolas. Postpaid.....\$2.10  
 50 choice gladiolas. Postpaid.....\$1.65  
 25 choice gladiolas. Postpaid......25

## COLLECTION NO. 7.

### THREE HARDY VINES

ONE Triumph Vine, one Honeysuckle, one Boston Ivy. Value \$1.25. You need vines for shade. delivered to you for..... **1.00**

## COLLECTION NO. 8.

### COLLECTION OF GERANIUMS

TEN different colors and varieties, 2½ inch pots. Value \$1.00. Delivered to you for..... **.85**

OR FIVE FOR 50c DELIVERED

## COLLECTION NO. 9.

### VEGETABLE PLANT COLLECTION

ONE DOZEN EACH Bonny Best Tomatoes, Black Beauty Egg Plant, Ruby King Pepper, Early Cabbage. All hardy transplanted Stock. Value. \$1.00. Delivered to you for..... **.80**

## COLLECTION NO. 10

TWO Doz. Asparagus Roots, 2 Horseradish Roots, 2 Rhubarb Roots, 1 doz. Mastodon Strawberry plants. 1 Concord Grape. Value \$2.85. Delivered to you for..... **2.00**

## COLLECTION NO. 11.

TWO DOZEN choice Astor plants, 1 Dozen Snap Dragons, Six Petunias, Six Lupine, Six Carnations, all well rooted plants. Value \$2.75 Delivered to you for..... **2.00**

## COLLECTION NO. 12.

### 12 CHOICE YOUNG HARDY PERENNIALS

One hardy Astor, blue; 1 Phlox, 1 Foxglove, 1 Canterbury Bell, 3 different Delphinium, 1 Anchusa, 1 Oriental Poppy, 1 hardy Pink and 2 Lilly of The Valley. Value \$1.50. Delivered to you for..... **1.05**

## Terms and Conditions of Sale---Parcel Post Rates

ORDER EARLY—State how you wish sent, P. P. or Express. All orders sent out within 24 hours. In the event stock is not ready, we back-order same and ship when ready. All orders less than fifty pounds sent P. P. Always add P. P. "10c for small orders." See Parcel Post Rates:

| PARCEL POST RATES WITHIN U. S. A.<br>Rates to Canada, 14c per lb. or<br>fraction thereof. | First lb.<br>or<br>fraction | Each add.<br>lb. or<br>fraction |
|---|-----------------------------|---------------------------------|
| First Zone within 50 miles of Wenatchee.....  | 7c                          | 1c                              |
| Second Zone within 50 to 150 miles.....   | 7c                          | 1c                              |
| Third Zone within 150 to 300 miles.....   | 8c                          | 2c                              |
| Fourth Zone within 300 to 600 miles.....  | 9c                          | 4c                              |
| Fifth Zone within 600 to 1000 miles.....  | 10c                         | 6c                              |
| Sixth Zone within 1000 to 1400 miles.....   | 11c                         | 8c                              |
| Seventh Zone within 1400 to 1800 miles.....   | 13c                         | 10c                             |
| Eighth Zone all over 1800 miles.....  | 14c                         | 12c                             |

Remittance should accompany every order sent—Checks, Money Orders or Stamps.

If your order is not properly filled, notify us at once. We substitute unless otherwise notified.

GUARANTEE.—While we exercise the greatest care to have all our stock run true to name, however it is mutually understood and agreed to between the purchaser and ourselves, that should any stock prove untrue, we shall in no case be liable for any sum greater than that originally received for such stock that may prove untrue; besides, we will not be responsible for the crop. All orders are booked only under the above conditions.—MILOT-MILLS COMPANY, Inc., Wenatchee, Washington.

# VEGETABLE PLANTS

We grow Vegetable Plants by the thousands. We use northern grown seeds and varieties adapted to this climate. We solicit your order for any quantity. No charge for packing. All orders carefully packed and sent by Parcels Post or Express. Please send cash with order, or satisfactory bank references. (All seeds listed at back of catalog.)

## Tomatoes

**Bonney Best Early**—Scarlet red. This is a vigorous grower; Leading variety.: very early.  
**Marglobe**—A splendid firm red canning tomato. few seed, heavy yielder.  
**Earliana**—Scarlet Red, very popular and early.  
**Ponderosa**—Purple crimson. The largest of all tomatoes.  
**John Baer**—Bright red. A fine canning tomato.  
**June Pink**—The Earliana of the purple varieties.  
**Stone**—The greatest canning tomato (bright red.) Late.  
**Dwarf Stone or Tree Tomato**—Largest fruited of all dwarf tomatoes. Red.  
 Transplanted—25c doz; \$1.50 per 100; \$12.00 per 1000. For 5000 or more, \$10.00 per 1000.  
 Any of above tomato plants, out of beds, 20c doz; \$1.00 six doz; \$1.25 per 100; \$6 and \$8 per 1000.

### GOLDEN QUEEN

Try a dozen or 100 of these; they are certainly fine. Large golden yellow tomato. 25c per doz.

### PEAR-SHAPED YELLOW

Fine for preserves—Price, per doz. 25c.

### YELLOW HUSK OR GROUND CHERRY

Prepared as preserves, they are unequalled for delicacy of flavor. Very easily grown. Plants 25c per doz; five doz. \$1.00.

## Celery

(All Celery are transplants)

**White Plume**—Very early white celery.  
**Golden Self-Blanching**—Is a money-maker, producing beautiful golden yellow stalks, very early. The best.  
**Giant Pascal**—A superior keeping sort. The stalks are very large, thick and solid.  
 Prices of above—25c per doz; \$1.00 for 5 doz. \$10 per 1000; Seedlings, per 1000 \$3.50  
**Celarias, or Turnip-Rooted Celery**, 25c per dozen.

## Pepper, or Mango

**Improved Ruby King**—The standard home and market sort.  
**Chinese Giant Pepper**—A very large, sweet pepper.  
**World-Beater**—A fine, large, sweet pepper.  
**Pimento Pepper**—The handsome fruit is thick-fleshed and firm. A heavy cropper.  
**Hot Peppers, Red Chili and Cayenne**—Early and enormously productive. Very hot.  
 The above plants: 25c per doz; \$1.50 per 100; \$12 per 1000. Special price on 5000 or more.

## Cauliflower

**Early Snowball**—Large solid heads. A sure cropper.  
**Dry Weather Giant**—A good variety for our climate.  
 Transplants, 25c per doz; \$1.50 per 100; \$10 and \$12 per 1000.  
 Out of beds, 20c per doz; \$1.00 per 100; \$8 and \$10 per 1000.

### THOUSAND HEADED KALE

Excellent for the table and for poultry greens. Transplants: 25c per doz; \$1.50 per 100. Out of beds: per doz. 20c.

## Cabbage

### COPENHAGEN MARKET CABBAGE

The best early round headed cabbage. Stands longest without bursting. Plants ready March first and on.

**Golden Acre**—New Cabbage. Ten days earlier than Copenhagen, and a little smaller. A money-maker.

**Prize Jersey Wakefield**—Pointed head.

**Early Winningstadt**—Pointed head.

### LATE CABBAGE

**Late Dutch Flat**—Large, flat-headed late cabbage.

**Danish Ballhead**—A large, round-headed cabbage. Any of the above cabbage plants, out of beds, 20c per doz; \$1.00 per 6 doz; \$6.00 per 1000 Write for prices on large quantities.

Transplants—25c doz; \$1.50 per 100; \$10 per 1000.

**RED CABBAGE** Plants, 25c per doz.

### BRUSSELS SPROUTS

25c per doz; \$6.00 and \$8.00 per 1000.

**PARSLEY PLANTS**—10c each; per doz. \$1.00.

### MINT

**Spearmint**—Each 10c; per dozen \$1.00.

### CHIVES

For flavoring. Per clump, each 25c.

**HORSERADISH** Nice roots, each 20c.

**SAGE** Per clump, 35c.

### EGG PLANT

**Tree or High Bush**—A splendid egg plant. Fruits are borne well above the ground. Transplanted plants, 25c dozen.

**Improved New York Purple**—Very large, smooth, dark brown color.

**Black Beauty**—The fruit is broad and thick, of most attractive form and of the finest flavor.

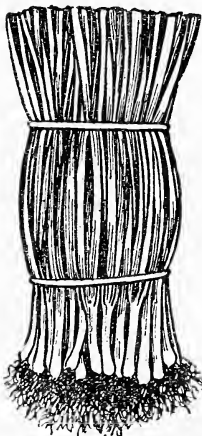
Price, 25c per doz; \$1.00 for 5 doz; \$1.75 per

Watermelon, Cucumber, Cantaloupe and Tomato Plants, out of pots; per doz. 75c; per 100 \$5.00.

## Onion Plants

**Bermuda Onion Plants**—Grow your own onions the new way from young plants. Easy to handle. Better than seeds or sets. You will be more than satisfied.

**Bermudas and Crystal Wax**  
 200 plants..... .50  
 500 plants .....1.25  
 1000 plants ..... 2.00  
 6000 plants..... 9.00



**SWEET POTATO PLANTS**

Nancy Hall and Yams—25c per doz; \$1.50 per 100; \$12.50 per 1000.

**ASPARAGUS**

Asparagus Roots—A splendid vegetable. Is very easily grown in any garden. Once planted you always have it. 35c per doz; \$2.00 per 100. Write for prices on large quantities.

Washington Rust Proof—One of the best. Fine large. Green.

Columbia White Tip—Large.

**RHUBARB OR PIE PLANT**

Myatt's Linnaeus—It is an early, tender variety. Superior quality—25c and 35c each.

Tobacco Plants—25c per doz; \$1.00 per 5 doz.

**GRAPES**

We recommend the following grapes for this section. Concord—Black. each 25c to 35c.

Moore's Early—Each 35c.

Warden—Black. Very large. Each 35c.

Diamond—A lovely white grape. 35c each.

Agawama—Red, very hardy. Each 25c.

Tokay—Red, large. Each 50c.

Niagara—White, medium. Each 35c.

Cheaper by the half doz. or more.

**STRAWBERRIES**

Mastodon—Never before such a berry as the Mastodon Strawberry. Best for the garden or field culture. Easily grown. Needs no special care or soil. Largest of any known everbearer. Bears three crops instead of one from one planting. Price 75c dozen; 50 for \$2.00; 100 for \$3.75

Progressive Everbearer—40c per doz; \$3.00 per 100; \$18.00 per 1000.

St. Regis Everbearing Raspberry—Very prolific till frost. 15c to 25c each; \$1.50 to \$2.50 per doz.

**PLANTING TABLE PER ACRE**

|                             |                |
|-----------------------------|----------------|
| Tomatoes—Planted 3x4 feet   | 3600 per acre  |
| Cabbage—Early, 2x3 feet     | 7260 per acre  |
| Cabbage—Late                | 6000 per acre  |
| Peppers—2x3 feet            | 7260 per acre  |
| Egg Plant—2x3 feet          | 7260 per acre  |
| Cauliflower—2x3 feet        | 7260 per acre  |
| Celery—1x3 feet             | 14520 per acre |
| Sweet Potato—2x4 feet       | 5600 per acre  |
| Strawberry plants—1½x3 feet | 8000 per acre  |

**TIME FOR PLANTING**

Early Cabbage, Cauliflower and Rhubarb, March to May 31. May and June for the following: Celery, Tomatoes, Peppers, Egg Plant, Sweet Potato Plants, Asparagus, Melons.

**BEDDING PLANTS BRIGHTEN YOUR HOME WITH MILOT-MILLS FLOWERS****ALLYSSUM**

Finest double—for boxes and baskets. 10c each; \$1.00 per dozen.

Carpet of Snow—Single compact dwarf for borders. 5c each; 60c per doz.

Lupine—A free flowering, easily grown annual, with long graceful spikes of pea-shaped flowers. Rich colors, pink rose, red, etc.—Mixed plants 75c doz.

Ageratum Floss Flower—Blue perfection; a fine bedding plant. 60c per dozen.

Acroclinium Everlasting—Double mixed. 60c per dozen.

Globe Amaranth—An everlasting flower. 60c per dozen.

Bellis Daisy—Very double, white Daisy; fine for border. 60c per dozen.

Centaurea Gymnocarpa (Dusty Miller)—White-leaved; used in boxes, baskets and borders. 10c each; \$1.00 per dozen.

**ASTERS**

Aster Plants of the following varieties in separate colors. 40c per dozen.

Beauty Aster—Azure blue, carmine, lavender, purple and white. Late blooming and fine lasting quality.

Early Wonder—Earliest of all. Pink and White.

Fire Ball Aster—A most brilliant dwarf aster.

Giant Comet Aster—Pink, crimson, light blue, royal purple and white, borne on long stiff stem.

Giant Crego Aster—Lavender, rose, pink and white. Large fluffy aster, extensively grown.

King Aster—Mixed colors. In form, the flowers are entirely distinct from any other variety.

Mixed Colors—30c per dozen. All transplanted plants, 3 to 4 inches high.

Sunshine Asters—Blue, pink and lilac. One of the most attractive novelties and anemone flowered. 40c dozen.

Queen of the Market—White, pink, purple, lavender and rose.

Candytuff Umbrellata—A delicate shade of rosy lavender; fine for cutting. Per dozen 60c.

Candytuff—White. Per dozen 60c.

Carnation Plants—We have them in red, pink, and white. Out of pots. Per dozen, \$1.50.

Carnation Giant Marguerite—The Chabaud and Margeurite flower early, are ever-blooming up to frost. 5c each; 60c per dozen.

Chinese Forget-Me-Not—A new plant from China. 12 to 18 inches tall; fine to cut. 5c each; 60c per dozen.

Chrysanthemum Coronarium—Double. 60c per dozen.

Cosmos—Fine for cutting; comes in very early. Pink and white. Per dozen 60c.

Coleus—Large, bright colored leaves. Assorted 10c, 15c, 20c each.

Small-Leaf Coleus—Fine for baskets and border.

Dianthus Garden Pinks—The best variety of colors to be had. Per dozen 60c.

Double Nasturtians—Fine for window boxes. 20c each.

Euphorbia (Snow of the Mountains)—Fine for bedding. 60c per dozen.

Fuchsias—Storm King, Black Prince and Trailing Queen. 25c and 50c each.

Heliotrope—Fragrant. A splendid bedding plant. You should try it. Each 25c.

Lobelias—Dwarf, single blue; fine for bordering. 5c and 10c each; 60c and \$1.00 per dozen.

Lobelia—Trailing blue. For baskets, etc. 60c per dozen.

Marguerites—Common. 15c to 25c each.

Marguerites, Madam Sander—Large double, 15c to 25c and 35c each.

**SPECIAL GIANT PETUNIA**

Diener's Ruffled Monster Petunia—The largest and most beautiful Petunias in existence. Have taken first prize wherever exhibited. Colors: Pink, red, giant white, pink glory, red with black center and purple.

**Petunias—Double.** A splendid assortment in white pink, purple and blotch. Out of pot 15c, 25c and 35c each. 12 for the price of 10.  
**Dwarf Petunias—**Rose morn and heavenly blue. Fine for basket and border boxes.

### MARIGOLDS

**Dwarf Legion of Honor—**Striped in color. Per dozen, 60c.  
**French Dwarf—**Per dozen, 60c.  
**New Lemon Queen—**Giant African; immense flower. 60c per dozen.  
**New Orange Queen—**Giant African, immense flower. 60c per dozen.  
**Calendula (Pot Marigold) —**Very large, double flowers of a dark orange-red. Per dozen, 60c.  
**Mimosa (Sensitive or Humble Plant)—**15c each.  
**Pansies—**Choice, 60c per dozen. Special choice, 75c per dozen.  
**Phlox Dremmondi—**Mixed colors. 60c per dozen.  
**Myosotis (Forget-Me-Nots)—**Each 10c to 25c.  
**French Marguerites, or Painted Daisies—**Daisylike flowers of many bright colorings. 5c each; 60c per dozen.  
**Swan River Daisy—**A charming little plant, light blue; flowers are produced in great profusion. 5c each; 60c per dozen.  
**Castor Oil Bean (Ricinus)—**Semi-tropical plants, grown largely for their picturesque foliage. 4-in. pot. Each 20c.  
**Santanelia—**A dwarf silvery gray plant, 6 inches. Fine for formal border. 10c each; \$1.00 dozen.  
**Verbena-like heads—**Orange and pink. Always in bloom. 25c each.  
**Lantanas—**Always in bloom. Pink. 25c each.  
**Oxalis, White and Buttercup—**An excellent little plant for pots. 25c each.  
**Purple Plume Grass—**For borders. 30c per doz.  
**Statice Sinuata—**Blue. Fine for drying. 5c each. 60c per dozen.  
**Ten Week Stocks—**White, pink, lavender, red and mixed colors. 60c per dozen.  
**Viola Cornuta Papilo—**Tufted Pansies; a beautiful butterfly violet blue pansy. 60c per dozen.  
**Viola Jersey Giant—**A wonderful large violet flower. 25c each.  
**Verbena Mammoth—**Color shade in blue, white pink and scarlet make an effective bedder. Out of pots. 75c per dozen.  
**Verbenas—**Mixed from boxes. 60c per dozen.

### NEW GIANT ZINNIAS (DAHLIA FLOWERING)

**Exquiset—**Tyrian rose color.  
**Old Rose—**Real rose; fine.  
**Golden State—**A beautiful yellow.  
**Crimson Monarch—**A real giant.  
**Oriole—**Immense orange.  
**Dream—**Large deep lavender.  
**Polar Bear—**White  
**Giant Attraction—**Immense; brick red.  
**Illumination—**Tyrian rose.  
**Scarlet Flame—**Large, bright red.  
**Meteor—**Dark red.  
**Buttercup—**Immense, deep yellow.  
**Canary Bird—**Large, delicate primrose.  
**Nice transplanted plants—**5c each; 60c per dozen. Mixed colors, 50c per dozen.  
**Wallflower Single—**Extra early Paris; a very exquisite flower for backgrounds. 60c per dozen.

### ANTIRRHINUM, OR SNAP DRAGON

**Ruby—**Rich velvety red.  
**The Rose—**Soft pink.  
**Old Gold—**Beautiful art shade  
**Evening Sky—**Orange, rose white throat.  
**Lovely—**White tipped lilac.

**Rose Dore—**Rose and gold.  
**Philadelphia Pink.**  
**Amber—**Queen.  
**Maralde—**Light copper.  
**Mont Blanc—**White.  
**Brilliant Scarlet**  
**Pot plants—**10c each; \$1.00 per dozen. Out of boxes, 60c per dozen. They are fine.  
 Did it ever occur to you that a collection of plants makes a most appropriate birthday gift, or for any occasion? Try it.

### BEGONIAS

**Rex Begonias—**Assorted. 25c and 50c each.  
**Angel Wing Begonia—**Pink; always in bloom. 15c to \$1.00 each.  
**Large Leaved Flowering Begonia—**25c to 50c each.  
**Begonia Verome—**25c each.  
**Begonia Semperflorens (Gracilis Luminosa)—**A beautiful plant in fiery red and rose shades. 25c each.  
**Xmas Cactus—**25c each.  
**Giant Flowering Cactus—**Red. 50c each.  
**Celosa Cristita (or Giant Coxcomb)—**Dwarf; very showy and stands hot wether. 60c per dozen.  
**Celosa Childsii (Chinese Woolflower)—**The flowers are ball-shaped and resemble a ball of wool. Color is vivid red. Plants, 5c each; 60c per dozen.  
**Celosa—Giant Pampus.** Exquisite red; 4 feet tall. 5c each; 60c per dozen.  
**Celosa—New Giant.** Many exquisite colors. 5c each; 60c per dozen.  
**Feverfew—**An old garden favorite with dark green finely cut foliage, throwing up clusters of pure white double flowers. 15c to 25c each.  
**Cuphia Platycentra (Cigar Plant)—**Grows twelve inches in height. Scarlet flower. 20c each.  
**Giant Amarellis Bulb—**Mixed colors. 85c each. Will bloom the first year.

## Cannas

### LARGE FLOWERING CANNAS

"Supreme" Quality

**CULTURE—**Cannas should be planted in good, rich garden soil, mixed with half of old rotten stable manure.

#### Red Shades—Green Foliage

**Charles Henderson—**4 ft. Brilliant crimson.  
**Pennsylvania—**6 ft. Overlaid orange.  
**The President—**4 ft. Flaming scarlet.

#### Variegated Flowers—Green Foliage

**Kate Gray—**6 ft. Orange carmine.  
**Apricot—**Buff, yellow and salmon pink.

#### Large Flowers—Bronz Foliage

**King Humbert—**Scarlet. Great favorite.  
**Wyoming—**Beautiful orange.

#### Pink Shades—Green Foliage

**Mrs. Alfred Conrad—**Salmon Pink.  
**City of Portland—**Fine, large, shell pink.

#### Yellow Shades—Green Foliage

**Florence Vaughan—**5 ft. Yellow, spotted crimson.  
**Yellow King Humbert—**4 ft. Orchid yellow

#### Giant Foliage Variety

**Gigantum—**8 ft. Bronze foliage.  
**Colossal—**8 ft. Green foliage.  
**Price of above Cannas:** 20c each; \$2.00 per dozen; \$15 per hundred.

### MIXED CANNAS

**All Leading Varieties—**Prices: 15c each; \$1.50 per dozen; \$12 per 100.  
 Be sure and plant Cannas for they do splendidly in this country.

## Gladiolus

- A. B. Kunderd—Fine pink and cream, ruffled.  
 Alton—A pleasing orange color.  
 Anna Eberius—Deep velvety purple.  
 Blue Jay—Lobelia blue, large blooms.  
 B. L. Smith—Very refined lavender pink.  
 Diana—Best commercial red, self color.  
 Diener's White—White, large plant and flower.  
 Dr. W. VanFleet—Tall, early pink.  
 Dunlaps—Odd shades of red, good novelty.  
 Elora—White, flushed pink throat.  
 Evelyn Kirtland—Tall, pink darker throat.  
 E. J. Shaylor—Tall rose pink, ruffled.  
 Gold—Clear, yellow.  
 Henry Ford—Dark velvety purple.  
 Immensity—Large, salmon, self colored.  
 Indian Summer—Large flower and plant, glistening pink.  
 Jack London—Salmon, with red lines. Fine.  
 Los Angeles—Shrimp pink.  
 Marshal Foch—Salmon pink, large flower, good.  
 Mary Pickford—Cream white, with lemon lip.  
 Mrs. John R. Walsh—Flesh pink, dark throat, ruffled.  
 Orange Flame—Vermillion orange, large and fine.  
 Peach Rose—Rose pink, darker throat.  
 Rose Ash—Ashes of roses. Tall, unique.  
 Ross Valley—Salmon pink overlaid with mauve.  
 Scarlino—Fine scarlet, large bloom.  
 Scarlet Princept—Large scarlet, self color.  
 Silver Moon—Milk white, large flowers.  
 Sweet Lavender—Very early lavender, dark throat.  
 Virginia Hale—Very refined, creamy rose pink.  
 Yellow Treasure—Prim pure golden yellow.  
 No. 1 bulbs, 3 for 25c; 85c per dozen. Mixed varieties, 6 for 40c; 75c per dozen; 100 for \$3.50.  
 No. 2 bulbs 50c per dozen.

## Hardy Lily Bulbs

- Lillium, Rubrum, or Red Lily.  
 Lillium Auratum—The gold banded lily of Japan.  
 Regal Lillium—A new white, very hardy. Fall prices. Dormant bulbs, 50c each.  
 St Joseph Lily—White. 50c each.  
 Started in pots for spring planting, 75c each.  
 Lily of the Valley—Pips. 10c each; \$1.00 dozen.

## Dahlias

### MIXED DAHLIAS

We have a fine assortment of named varieties, that got mixed when being moved. They range in price from 25c to 75c each. We are offering these at 15c each or \$1.50 per dozen While they last.

### CACTUS DAHLIAS

- |  |     |
|--|-----|
| Attraction Giant—Huge lavender.....                                | .30 |
| Autumn Prince—Yellow and salmon, a good cut flower .....           | .35 |
| Betty Austin—Perfect bloom, yellow, at base, blending to rose..... | .50 |
| Bianca—Lavender pink, long stems.....                              | .35 |
| Brilliance—Fiery scarlet.....                                      | .25 |
| Charles Sherwood—Light red.....                                    | .35 |
| Country Girl—Salmon rose.....                                      | .35 |
| Chipeta—Large flower, amaranth.....                                | .40 |
| Ephriam Gill—Giant flower, pink with white center .....            | .35 |
| General Pershing—Pure white, cream center                          | .35 |
| H Wearing—Long striped petals, salmon to amber .....               | .35 |

- |  |     |
|--|-----|
| Klondyke—Wonderful gold.....                         | .30 |
| Miss Helen Durnbough—Giant white overlaid pink ..... | .35 |
| Niebe Lungenhort—Old rose giant.....                 | .35 |
| Oregon—Deep rose carmine.....                        | .30 |
| Pierot—Giant gold amber and white.....               | .30 |
| Polar Star—Pure white.....                           | .25 |
| Walter Deegan—Intense, rich fiery scarlet.....       | .35 |

### DECORATIVE DAHLIAS

- |  |     |
|--|-----|
| Amun Ra—Giant flower, copper and orange ..                         | .65 |
| Aurora—Large, double flower, purple and white .....                | .35 |
| Bessie Boston—Large deep cardinal red.....                         | .35 |
| Black Beauty—Large, velvety maroon, almost black .....             | .35 |
| Cream King—Immense flower, soft rose.....                          | .35 |
| Crimson Bedder—Crimson ball.....                                   | .20 |
| Dr. Trevis—Giant flower, old rose shaded to gold .....             | .35 |
| King Alfred—Giant purple.....                                      | .30 |
| Lovoni—Shell pink.....   | .25 |
| Marcella Gill—Wonderful pink of the best.....                      | .30 |
| Millionaire—Giant flower, lavender, shaded to white at center..... | .50 |
| Mrs. Carl Selbach—Long stem, monster flower, pink .....            | .35 |
| Pink Bedder—Pink ball.....   | .20 |
| Pride of California—monster rich moroon....                        | .35 |

### PEONY FLOWERING DAHLIAS

- |  |     |
|--|-----|
| Coconina—Red .....   | .25 |
| Billionaire Monster—Golden orange, a beauty                    | .35 |
| Glorious—Tints of cinnamon, apricot and buff                   | .60 |
| Ida V. Warner—Giant, pink.....                                 | .50 |
| Kimona—Large, red and yellow.....                              | .75 |
| Phenomena—Fine high pink.....                                  | .35 |
| Wasco Beauty—Giant Cactus, bronze red, tipped with yellow..... | .50 |
| Liberty—Enormous, salmon scarlet.....                          | .75 |
| Van Dyke—Large Pink.....                                       | .75 |
| Sunstar—Bright rosy crimson.....                               | .35 |
| Autumn Marble—Large golden buff.....                           | .35 |
| Elsa—Large pure white.....                                     | .35 |
| Garnet King—Free flowering, rich deep garnet .....             | .40 |
| Mrs. Helen Ladd Corbett—Large lavender.....                    | .35 |
| Mrs. Rowena Fairchild—Giant size, beautiful soft pink .....    | .35 |
| Pride of Portland—Bright yellow and rich red .....             | .35 |
| James C. Gill—Wonderful cut flower, autumn shades .....        | .35 |
| Maple Leaf—Saucer shape flowers, bright gold                   | .50 |

### SPECIAL ON NAMED DAHLIAS

One each of any listed. Dozen for \$3.25 cash, post paid.

Will substitute if any you order is sold out. This is a bargain!

## Hardy Perennials

- New Hardy Carnation "Rosse Terchee"—This variety is of easy culture and produces enormous flowers, equal to any grown under glass. Colors: white, red, rose, crimson, purple and salmon. Strong young plants. 10c each; \$1.00 dozen.
- Artemisia (Silver King)—A wonderful addition for your shrubbery or perennial border, forming a large compact moss of beautiful silver foliage. Fine for cutting. Price 20c, 25c, 50c each.
- Aconitum (Monk's Hood)—Beautiful blue. Two shades. 20c each.



**Aubrieta**—Blue, violet and rose mixture. Produces great masses of bloom in early spring, fine for rockeries and borders, very hardy. Young plants 10c each; \$1.00 per dozen.

**Anemone (Windflower)**—A very pleasing perennial, producing large flowers; few plants compare with them in beauty; fine for bouquets. Price \$1.00 dozen.

**Anchusa**—A very hardy, vigorous growing plant, with large spikes of bright for-get-me-not blue flowers. 25c and 50c each.

**Bellas (or English Daisy)**—60c per dozen.

**Long Spurred Columbine**—10c each; \$1.00 dozen.

**Coreopsis**—Hardy plants. The flowers are large, rich golden yellow daisies; 2 or 3 feet. 35c and 50c per clump.

**Calamintha**—Graceful rock plant, purple. 35c each.

**Campanula (Bellflower Canterbury Bell)**— Blue white and pink. Old-fashioned hardy plants, easily grown. 1 year old, 25c each; 2 year old 50c each.

**Dielytra, or Bleeding Heart**—50c to 75c each.

**Dianthus (or Garden Pink)**—A hardy perennial 75c per dozen.

**Digitalis (Fox Glove)**—An old fashioned plant. White, purple and pink. 15c each; large, 75c ea.

**Delphinium (Giant Hybrid)**—Giant spikes of blue, and lavender. 25c and 50c each.

**Delphinium (Belladonna)**— Beautiful light blue, 25c and 50c each.

**Delphinium (Chinese)**—Dwarf, dark blue, 15c to 35c each.

**Delphinium (Bellmost)**—Dark Blue. 25c & 50c ea.

**Gypsophila (Baby's Breath)**—The flowers are valuable for bouquet making, either fresh or dried. Roots, 25c and 50c each.

**Golden Glow (or Rudbeckia)**—Yellow flowering plant that should find a place in every garden, lawn and park. 25c and 35c each.

**Hardy Asters**—Tall flowering, stately plants, which bloom very late, usually after first frost, when other flowers are about gone. Lavender, white and blue. 25c and 50c each.

**Helenium (Sneezewort)**—These desirable perennials succeed in almost any soil. The flowers are splendid for cutting. Yellow and bronze. 25c to 50c each.

**Hemerocallis Flava (Yellow Day Lily)**—Blossoms of deep lemon yellow, flowers in June and July. Fragrant. 50c each.

**Eryngium (Sea Holly)**—Steel Blue flower. 75c ea.

**Hollyhocks**—Separate colors, white, pink, yellow and red double. Out of pots, 20c each.

**Iberis (Perennial Candytuff)**— Dwarf evergreen plants, 6 to 10 inches, covered with blooms in spring and early summer. Excellent for rockeries. 15c to 35c each.

**GERMAN IRIS**

**Iris Germanica**—The "Fleur de Lis" of France, with exquisite haunting fragrance; second only to the Peony in perennials. Capable of establishment in any kind of soil, they will attain greater perfection of growth and flowering in a damp or marshy situation.

**Archeveque**—New, rare color, deep purple violet. 50c each.

**Eldorado**—Old gold and purple, large. 50c each.

**Isoline**—Lilac and mauve; beautiful. 50c each.

**Mine Chereau**—Lavender, pink mottled all over, creamy white. 50c each.

**Sans Souci**—Fine yellow gold and mahogany brown. 30c each.

**Kochi**—Claret purple, very handsome. 50c each.

**Buttonhole Blue**—35c each.

**Lavender Pearl**—35c each.

**Blue White**—35c each.

**Clear Yellow**—35c each.

**Japanese Lantern Plant**—Each 15c to 35c.

**Lily of the Valley**—For outdoor planting in shady places. Pips. 10c each; \$1.00 dozen.

**Poppy Iceland**—Hardy, mixed. 15c.

**Poppy, Oriental**—Hardy perennials, producing immense flowers in gorgeous red. 25c and 50c each.

**Pyrranthum Hybridum**—This grand old-fashioned hardy perennial is easy to grow in any good garden soil. Large daisies, in bright shades. 10c each; \$1.00 per dozen.

**Peas**—Hardy perennial climber. Splendid cut flowers. Red, white and pink. 25c each.

**Statice Latifolia (Sea Lavender)**—Masses of clear mauve flowers that can be dried. 2 year, 50c each; 1 year, 20c each.

**Shasta Daisy**—Large clumps. 35c and 50c each.

**Sweet William**—Well known, free blooming. Per dozen 50c.

**Tritoma Pfitzerii (Red Hot Poker, Flame Flower, or Torch Lily; the Ever-blooming Flame Flower)**—35c to 50c each.

**Sweet Violet Plants**—Each 15c; clump 75c.

**Veronica (Speed Well)**—Spikes of beautiful amethyst blue. 15c and 20c each; \$2.00 per dozen.

**Yucca (Adam's Needle)**—A majestic plant, especially fine for producing tropical effects. \$1.00 each.

**Peonies**—Fine hardy plants. They are at home in any climate or soil. Three shades of pink; three different whites; one red kind; one crimson and cream. 50c, 60c and 75c each.

**Hardy English Primrose**—Low growing rich yellow and bronzed flowers, fine for rockery. 3 inch pot, 25c each. Young plants 75c dozen.

**Physostegia (False Dragon-head)**—One of the prettiest hardy perennials, grows bushy with spikes or delicate pink flowers. Young plants, 75c per dozen; large plants, 35c each.

**Valeriana (or Garden Heliotrope)**—Showy heads of old rose. 50c each.

**Penstemons**—Grows like Snap Dragon, though it is more beautiful. Mixed colors. 75c dozen.

**Phlox**—Hardy named varieties. They should be planted in every garden. Pink, white, rose, red, purple and lavender. Pink red eye, white red eye and lovely shades of clear salmon. 35c each; \$3.00 per dozen. Small plants, 20c each.

**Physotegid or False Dragon Head**—Rose shade. 35c each.

#### HARDY OUTDOOR CHRYSANTHEMUMS

The following will furnish an abundance of flowers from August until heavy frost. Five following varieties:

**A. Barham**—Bronze; incurving.  
**Normandie**—White.  
**Firefly**—Reddish bronze; very early.  
**Golden Queen**—Large, pure golden yellow.  
**Hardy Pink**—Very free flowering.  
 Prices of above: 15c each; \$1.50 per dozen.

#### Shades and Ornamental Trees

**Weeping Willow**—75c to \$1.00 each.  
**Red Bud**—75c each.  
**Cut Leaf Birch**—6, 7 and 8 feet. \$1.75, \$2.50 and \$3.75 each.  
**Carolina Poplar**—6 feet. \$1.00 each. 8 to 10 ft. \$1.50 to \$2.50 each.  
**American Elm**—10 ft. \$1.50 each.  
**Siberian Elm**—A most desirable tree for this section. 8 to 10 ft. \$2.50 each; 6 to 8 ft. \$1.75; 5 ft. \$1.00.

Hackberry—6 ft. \$1.50 each.  
 Silver Maple—\$1.00 and \$1.50 each.  
 Norway Maple—\$1.00 and \$1.50 each.  
 Flowering Crab—\$1.00 each.  
 Purple Leaf Plum—Handsome form with rich purple leaves. 4 to 6 ft. \$1.00.  
 Scarlet Hawthorne—\$1.50 to \$2.50 each.  
 American Chestnut—4 to 5 feet. \$1.25 each.  
 Prunes (Triloba)—2 to 3 feet. 75c each.  
 Black Locust—6 to 11 ft. \$1.00 to \$2.50 each.  
 Globe Locust—\$2.00 to \$4.00 each.

## Hardy Vines

Virginia Creeper—Very vigorous flower. 50c and \$1.00 each.  
 Ampelopsis Vietchii, or Boston Ivy—Rapid grower. Fine for covering brick chimneys, stone and cement walls. Each 35c and 50c.  
 Dutchman—Pipe vine, large leaves. 40c each.  
 Trumpet Creepers—Most handsome of all cultivated species, blooming profusely with long scarlet trumpet flowers, in the late summer when no other vines are in bloom. Special price 3 year old stock, 35c, 50c and 75c each.  
 Kudzu Vine—A rapid growing vine. Out of pots, 25c each.  
 Hop Roots—25c each.  
 English Ivy—Strong roots, out of pots. 35c each.  
 Hall's Japan Honeysuckle—Fragrant flowers, pinkish yellow, rapid grower. 35c and 75c each.  
 Heckrotii—Orange scarlet flowers, ever blooming and very fragrant. 35c each.  
 Wisteria—Chinese purple. 50c each.  
 (Look under Rose list for Vining Roses)

## ANNUAL VINES FOR PORCH BASKETS AND WINDOW BOXES

Parlor Ivy—Rich green leaves, very rapid grower. 20c each.  
 Kenilworth Ivy—A charming trailing plant, especially adapted for hanging baskets and porch boxes. Each 20c.  
 Maderia Vine—A popular old-fashioned vine, strong plants. 25c each.  
 Smilax—A dainty vine, having a tendency to climb up. 25c each.  
 Trailing Musk—In both green and variegated leaves. Trails downward. 20c each.  
 Vinca, Variegated—A lovely trailing vine with large glossy leaves of green and white. 20c to 35c each.  
 Vinca—Plain green, large leaves, blue flowers. 20c and 35c each.  
 Trailing Lobelia—Blue flower. 10c each.  
 Moon Vine—Large white flowers. Very fast grower for covering of porches. 20c each.  
 Cobea Scandens—A cup and saucer vine. Growing 30 feet in one season. Covered with thousands of blue bell shaped flowers. 20c each.

## Hardy Shrubbery

For landscape planting, suitable for this section. We are always pleased to help you make a proper planting.

Almond Double Flowering—Pink. Very early. Price 75c each.  
 Almond Double Flowering—White. Very early. Price 75c each.  
 Althea Bush—Large, handsome flowers. Bloom late in summer. Price \$1.00.  
 Amorpha—Flowers violet purple in clustered racemes. Price 75c.  
 Barbary Thunbergi—Three years. Price 25c to 50c. Discount on large quantities.

Buckthorn—Tall, twiggy bush, dark green leaves and white flowers. Price 50c.  
 Button Bush—Globe flower with glossy leaves, 60c.  
 Calycanthus (Sweet Scented Shrub)—An old favorite. Flowers are rich dark crimson. Delicious perfume. 50c and 75c each.  
 Caragana—Yellow, sweet pear shaped flowers. A tall grower. Price 50c.  
 Cornus Stolonifera—Red bark. White flower. Is very decorative. Price 50c each.  
 Cotoneaster—Low shrub, dark green leaves, pinkish white flowers, red fruit, attractive in rockeries. Price \$1.00 to \$1.50 each.  
 Duetzia Rosea—Double rose flower. Dense, quick grower. Price 75c each.  
 Deutzia (Pride of Rochester)—Shrub. White flowers. Price 75c each.  
 Desmodium—Purplish red flower. Late fall. 75c ea.  
 Elder—Finest golden leaved shrub. Flowers and fruit. Price 75c each.  
 Forsythia Fortunei—These splendid old shrubs, with masses of yellow, flower very early in the spring. 50c and 75c each.  
 Honeysuckle (Bella Alba)—White. 60c each.  
 Honeysuckle (Bella Rosea)—Dense growing dwarf pink flower. Price 50c each.  
 Honeysuckle (Tartarian)—Tall pink. 75c each.  
 Honeysuckle (Tartarian)—Tall red. 75c each.  
 Honeysuckle (Tartarian)—Tall white. 50c each.  
 Hydrangea Arborescans (Hill of Snow) — Late blooming. Very attractive. Price 50c to \$1.00 each.  
 Hydrangea, P. G.—Large cluster of flowers. Price 50c, 75c and \$1.50.  
 Kerria, Japanese—Double yellow, a very desirable shrub. 75c each.  
 Lilac—Darkest. Price \$1.50 each.  
 Lilac—Single white. Price 75c to \$1.50 each.  
 Lilac—Persian purple. Price 50c to 75c each.  
 Lilac—Common white. Price 50c to \$1.50.  
 Lilac—Persian white. Price \$1.00 each.  
 Lilac (Marie Le Graye, S.)—Very fine, pure white. Price \$1.50 each.  
 Lilac (Sen Volland, D.)—Rosy red. \$1.50 each.  
 Osage—Orange. 25c each.  
 Private Hedge Plants—The very best variety is what we offer. Price \$8 to \$12 per hundred.  
 Prunes Triboli—Pink flowering plum. 75c each.  
 Pearl Bush (Grandiflora)—Hardy, pure white flowers in clusters on light wiry branches. \$1 each.  
 Quince (Japanese)—Bright red flower; very early. Price 75c each.  
 Snowball—Very handsome, ball shaped flowers. Price 75c and \$1.00 each.  
 Snowberry Red—Covered with red berries most all winter. Price 50c each.  
 Snowberry White—Twenty-four inches tall, with snow white berries. Price 50c each.  
 Spirea Anthony Waterer—Dwarf, bushy, spreading type. Rosy crimson. Price 50c to \$1 each.  
 Spirea Douglassi—Deep red flowers. 75c each.  
 Spirea Opulifolia Golden—Golden foliage, making a fine contrast in a planting. Price 75c each.  
 Spirea Tomentosa—Rose pink flowers. 50c each.  
 Spirea Stedendra—A wonderful low grown shrub for bank and rockeries. Price \$1.00 each.  
 Spirea Thunbergia—Dense, fluffy bush. Flowers pure white, borne in feathery masses in the early spring. Price 50c and 75c each.  
 Spirea Van Houttei—The grandest of all Spirea and one of the best of all shrubs. A complete fountain of pure white blooms. Price 35c to 75c, \$1.00 and \$1.50 each.

**Syringa Avalenche (or Mock Orange)**—The flowers are numerous, creamy white and very fragrant. Price 75c each.

**Bouquet Blanche**—Dwarf growth with long slender branches, densely covered from base to top with double sweet scented flowers of creamy white. Price 75c each.

**Syringa (New Virginia)**—One of the most beautiful new ever-blooming varieties. It is pure white, sweetly scented. Price 75c each.

**Sumac**—Cut leaf, very ornamental. 75c each.

**Tamarix (African)**—Fine feathery foliage, usually pink flowers in loose panicles. Price 50c to \$1.

**Tamarix (Hispid)**—Ever-blooming Tamarix \$1.00.

**Wiegela Eva Rathke**—Deep Carmine, red flowers. Price 75c to \$1.00 each.

**Wiegela Abel Carrier**—Rose carmine flowers with yellow spots in throat. Price 75c each.

**Wiegela Floriounda**—Perfuse bloomer, dark pink. Price 75c each.

**Wiegela Roses**—Early flowering, rose color. 75c.

**Wiegela Variegated**—Leaves margined and streaked creamy white. Flowers pink. Price 75c ea.

**Snow Ball Bushes**—Sweet scented snowball. Price 75c to \$1.00.

**Virburnum (Dentatum)**—Bushy shrub with heart shaped leaves, bright green fading with rich tones of purple and red. Clusters of white flowers. Price \$1.00 each.

**High Bush Cranberries**—Hardy shrubs with spreading branches and flat clusters of white flowers. Scarlet berries. Price 75c each.

**Virburnum (Opulus Sterile)**—Hardy shrubs with showy clusters of flowers globular in shape. Very popular. Price 75c each.

**Virburnum (Japan Snowball)**—The choicest of its class. Pure white, ball shaped clusters of flowers in May. Price \$1.00 each.

## Rose Bushes

**Hardy Two-year old Hybred Tea, Teas, Hardy Perpetuals and Climbing Roses.** (Sure to grow). (Water freely, never allow the roots to become drv).

**American Beauty**—HP red, very fragrant..... .75

**Arthur R. Goodwin**—HT copper..... .75

**Aaron Ward**—HT Indian yellow, very profuse..... .75

**Bessie Brown**—HT creamy white..... .60

**Betty**—HT coppery rose..... .75

**Cecil Brunner**—baby pink..... .60

**Commonwealth**—HT deep pink..... .60

**Columbia**—HT peach pink..... .60

**Chateau de Clos Voguet**—HP deep velvety maroon..... .60

**Crimson Emblem**—HP non fading crimson rose..... .60

**Duchess of Albany**—HT bright pink LaFrance..... .60

**Dorothy Page Roberts**—HT copper, pink and apricot..... .60

**Edith Part**—HT rosy red, good substance..... .60

**Edward Mawle**—HP crimson, fine bloomer..... .60

**Florex**—HT salmon to orange..... .60

**Frau Karl Druschke**—HP pure white American beauty..... .60

**Gruss an Tiplitz**—HT bright scarlet..... .60

**General McArthur**—HT scarlet, fragrant..... .60

**Golden Ophelia**—HT golden yellow..... .75

**General Jack**—HP dark crimson, very hardy..... .60

**Hugonis**—P golden rose of china..... .60

**Hadley**—HT crimson, long bud..... .60

**Hugh Dickson**—HP brilliant scarlet, strong and free..... .60

**Hoosier Beauty**—HP dark crimson..... .60

**Irish Fireflame**—Single, gold to crimson, fine bud..... .60

**J. B. Clark**—HT intense scarlet, large and vigorous..... .60

**J. L. Mock**—HT pink, cherry red reverse side of petal..... .60

**Killarney Brilliant**—HT brilliant pink, long bud..... .75

**Kaiserine A. Victoria**—HT creamy white..... .75

**Lady Hillingdon**—HT apricot, nice bud..... .75

**Los Angeles**—HT pink to coral..... .75

**Madame Butterfly**—HT glorified ophelia..... .75

**Mrs. H. R. Darlington**—HT creamy white..... .75

**Mrs. John Lang**—HP shell pink, long stem..... .60

**Mme. Caroline Testout**—HT fine pink Portland Rose..... .60

**Mme. Edouard Herriott**—HT copper, fine bloomer. (Daily Mail Rose)..... .60

**Ophelia**—HT salmon pink..... .60

**Paul Neyron**—HT a giant rose..... .60

**Pink Radiance**—HT ever-blooming pink..... .60

**Rose Marie**—HT watermelon red, fine bedding rose..... .60

**Rapture**—HT new. Very soft pink ophelia..... .75

**Red Radiance**—HT crimson..... .60

**Sunburst**—HT yellow..... .60

**Salmon Spray**—cluster rose, pink salmon..... .60

**Souv'd Claudius Pernet**—HT wonderful yellow..... .75

**Ulrich Brunner**—HP red, very hardy..... .60

**T. F. Cozier**—HT canary yellow, long bud..... .60

All the above named 2 year Roses, \$5.50 per doz. 6 for \$3.00.

Good mixed 2 year old rose, special \$4.50 per doz.

### CLIMBING ROSES (2 years old)

**Cl. American Pillar**—Large, single, pink to white center..... .60

**Cl. American Beauty**—Large red..... .75

**Cl. Edouard Herriot**—Copper red..... .75

**Cl. Hadley**—Crimson..... .60

**Cl. Los Angeles**—Pink to coral..... .60

**Cl. Paul**—Scarlet climber..... .60

**Cl. Flower of Fairfield**—Crimson, long bloomer..... .60

**Cl. Mme. Caroline Testout**—Large pink..... .60

**Cl. Thousand Shon**—Rose of a thousand colors..... .60

**Cl. Dorothy Perkins**—Pink cluster..... .60

### YEAR-OLD ROSES

(Out of pots, 20c each; \$2.00 per dozen)

**Alexander King Gray**—Fine yellow.

**Ada Lovett**—Shell pink.

**American Legion**—Deep cherry.

**American Pillar**—Climber, apple blossom pink.

**Antoine Revoire**—Creamy white.

**Aviator Bleriot**—Saffron yellow.

**Bessie Brown**—Pearly white, tinted flesh.

**Champion of the World**—Deep rose pink.

**Chas. K. Douglass**—Flaming red.

**Charmer**—Silver pink.

**Cl. American Beauty**—Rosy red.

**Cl. Helen Good**—Red.

**Cl. Sunburst**—Yellow.

**Crimson Queen**—Deep crimson.

**Crimson Rambler**—Red cluster.

**Dorothy Perkins Rambler**—Pink cluster.

**Cl. Dr. Van Fleet**—Flesh pink.

**Etoile De France**—Crimson.

**Francis Scott Key**—Deep red.

General Jack—Shining crimson.  
 General McArthur—Brilliant red.  
 Helen Good—Creamy pink.  
 Hoosier Beauty—Rich crimson.  
 Hugonis—Golden rose of China.  
 J. L. Mock—Clear pink, reverse dark pink.  
 Kaiserine Aug. Victoria—Creamy white.  
 Lady Hillingdon—Deep golden yellow.  
 Le France—Silver pink.  
 Mme. A. Chatenay—Rose pink.  
 Mme. Constant Soupert—Deep salmon yellow.  
 Mme. Cochet—Pink.  
 Meteor—Dark red.  
 Mme. Cecil Brunner—Baby pink.  
 Mrs. Aaron Ward—Golden orange.  
 Ophelia—Salmon pink.  
 Paul Scarlet Climber—Scarlet.  
 Tausendschoen Cli.—White, pink, and rose.  
 Radiance—Pink.  
 Sunburst—Yellow.

## Evergreens

Suitable for This Section.

Depressa Juniper—Low spreading Juniper. 18 in.  
 Price \$1.50 each.  
 Irish Juniper—Slender grower, 24 to 30 inches.  
 Price \$2.00 to \$5.00 each; 12 inches, price \$1.00 each.  
 Chinese Juniper—1½ feet. Blue green, Pyramidal shape. \$3.00 to \$5.00 each.  
 Virginia Juniper—2 to 3 feet. Columnar, dark green. \$2.00, \$3.00 and \$5.00 each.  
 Globe Arbor Vitae—12 to 18 inches. Round green and compact. \$2.00 to \$3.00; 10 in. 75c to \$1.00.  
 Chinese Arbor Vitae—18 to 30 inches, oval, green. \$2.00 to \$5.00 each.  
 Pyramidal Arbor Vitae—18 to 30 in. Pyramidal. \$1.50 to \$6.00 each.  
 Lawson Cypress—18 inches. \$1.00 each.  
 Retinispora Plumosa—18 to 34 inches. Ball-like branches, very compact. \$2.50 to \$5.00 each.  
 Colorado Blue Spruce—18 to 24 inches. One of the most beautiful of the blue evergreens. \$5.00 to \$6.00; 12 inches, \$1.00.  
 Norway Spruce—1½ to 3 feet. Dark green, very fine. \$2.00 to \$5.00 each.  
 White Spruce—2 to 3 feet. Light green. \$2.50 to \$5.00 each.  
 Spanish Fir—Very compact. Dark green, 3 to 4 feet. \$6.00 each.  
 Mugho Pine—New dwarf. Dark green evergreen. Everyone that sees it wants it. \$1.50 to \$5.00 each.  
 Boxwoods—6 to 12 inches. 75c to \$2.00 each.  
 Japanese Spurge—Dwarf evergreen for shady corners. Grows 6 inches high and spreads over the ground. Very hardy. 20c each.  
 Pick out your evergreen in our nursery.  
 Small Evergreen—same as above, 6 to 10 inches. Price 35c to 75c each.

## CHEERFUL COLLECTION OF DAHLIAS

8 Choice Dahlias, \$2.00; 12 Choice Gladiolas, 50c.

Proper fertilizers, when correctly applied, reduce the number of culls and bring earlier maturity. Let us assist you with fertilizer problems.

Our practical experience in the market garden business, together with our constant contact with growers, enables us to fill your requirements satisfactorily. Home gardeners also receive the same high quality seeds and plants.

## Decorations

For Weddings, Dinners, Parties, Churches, and the Ball Room. If stuck for a scheme, ask us.

## Bulbs

### NOT ENOUGH FALL BULBS PLANTED

When you see them in bloom this spring in our gardens, make your selection and place your order for fall planting. Very easily grown.

MILOT-MILLS FALL COLLECTION BULBS—50 assorted Tulips, Daffodils, Croceus, Snowdrops, and Hyaciaths. \$3.00 delivered.

### RAINBOW COLLECTION

GLADIOLUS BULBS—50 assorted blooming sizes.

Price \$1.50. You will be pleased.

PEONIES—1 Red, 1 White, 1 Pink, choice double. Special \$1.50, prepared for spring planting.

## Geraniums

Apple Blossom—Double, pink.  
 Cibiel—Single, salmon.  
 Mme. Bucker—Double, white.  
 Hartman—Rose shade, very double.  
 Jean Viaud—Semi double, bright, clear mauve pink.  
 Henry F. Mitchell—Fine double red, very large.  
 Palmer—Single, red with white eye. Exquisite.  
 Poitevine—Double, salmon pink.  
 Richard—Semi double, bright vermilion.  
 S. A. Nutt—Double, rich crimson, fine bedder.  
 Dispot—Double, combination of red, violet and lilac.  
 Queen of the Whites—Large, single white.  
 Col. Gillan—Bright, scarlet maroon, single.  
 Yvette Prost—Single, large, rose pink.  
 Mme. P. Morla—Single, rosy salmon.  
 Frego—Single, Salmon pink.  
 Radio Red—Double, bright red.  
 Jean Overle—Double, peach pink, large trusses.  
 Marquis de Montmort—Double, deep crimson carmine, very novel.  
 Miss F. Perkins—Double, exquisite shade or rose pink.  
 Mrs. Brown Potter—Single, bright soft rose.  
 Mme. Landry—Double, brilliant shade of apricot salmon.  
 Maryland—Double, intense fiery red; a beauty. The above named varieties 2½ inch pots, 15c each; 3 inch pots 20c each; 4 inch pots 35c each; 12 for the price of ten.

## Ivy Geraniums

Ivy—light pink.  
 Ivy—Rose red.  
 Ivy—Rose pink.

These varieties are of a trailing habit, and are fine for porch boxes and baskets. Price the same as other Geraniums.

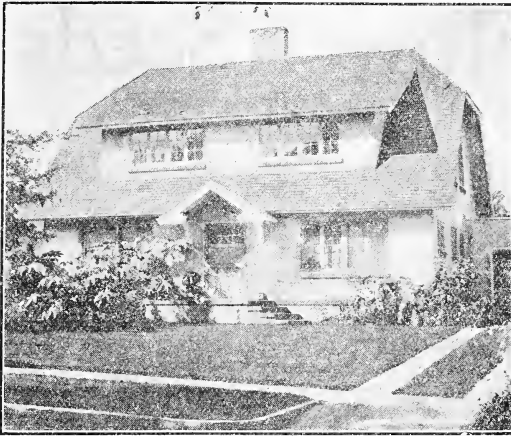
## PELARGONIUMS

(Martha Washington Geraniums)

Easter Greetings—Everblooming.  
 Crimson King—Intense crimson.  
 Lucy Becker—Rose, pink, blotched maroon.  
 Scented Leaved Geraniums—Rose and oak-leaved.  
 Pelarosa—New; bright pink flowers.

Prices of Geraniums listed above: 2½ inch pots 15c each; 3 inch pots, 20c each; 4 inch pots, 35c each; 5 inch pots, 50c each; 6 inch pots, 75c each. Special 5 for 60c.

Mixed Geraniums, including many of the good varieties, 15c, 20c, and 25c each; \$1.50, \$2.00 and \$3.00 per dozen. Special, 10 for \$1.00.



Castor Beans, Grown in One Season

### Rockery Plants

Sedum Acres (Golden Moss) Vincas; Trailing Musk, Variegated foliage; Sedum Lydium, Bronz green foliage; Campanula (Star of Bethlehem), low trailing habit, white flowers; Hardy English Primrose; Hardy Candy Tuft; Grass Pinks; Dwarf Iris; Aubrietia; Verbenas; Forget-Me-Nots; Artemesia, (Silver King); Purple Fountain Grass; Striped Grass; Petunias. Price, 15c or \$1.50 per dozen. Dwarf evergreens, 75c and \$1.50 each.



### Beautiful Home Gardens

Our knowledge of home planting of shrubbery and blooming plants is at your disposal when you are ready to plan your home gardens. And of course we shall be glad to have your order for the things you will need to make your gardens beautiful. Our plants are healthy and true to name. They will give you much joy and complete satisfaction.

### Garden Pottery

Large Ornamental Roman Pots, each.....\$5.00  
 Medium Ornamental Roman Pots, each.....\$2.00  
 Large Ornamental Garden Pots with Saucers, \$4.00  
 Stone Hanging Pots, each.....\$1.50 to \$2.00.  
 Birdbaths—Soft buff stone, each \$6.50 to \$10.00.  
 A great thing to attract the birds and also add beauty to your planting.



### Plant Evergreens for Perpetual Beauty

Take advantage of the natural beauty and color charm of our Colorado blue spruce, a magnificent blue for garden decoration. Then there is our pyramidal arborvitae, of light green foliage, in columnar form like the juniper or yew. All varieties of evergreens are contained in our complete stock.

Our Landscape Department is at your service.

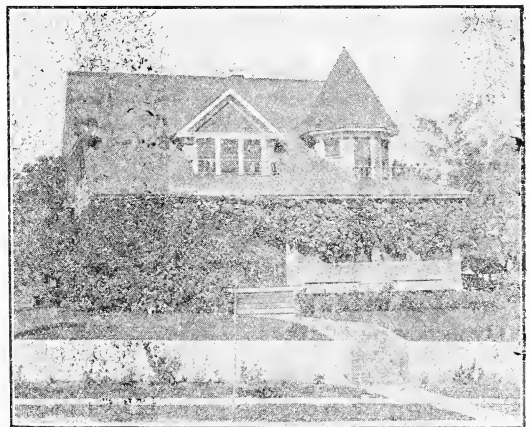
### Garden Work

At all times we have men we can send out to do any kind of garden work you may want done, such as pruning, fertilizing, planting, spading and spraying for insects or making a lily pool.

Phone 875. Man's time starts when he leaves till he gets back.

### Free Information Bureau

It is our pleasure at all times to give you information on the growing of trees, plants, seeds, etc. If we have not the information available we will get it for you. Call on us any time. We are at your service. Visit our big greenhouse and gardens, you are always welcome.



Vines and Shrubs Add to the Home's Beauty.

Before putting plants in a wooden window box whitewash the inside of the box. This not only keeps the box from rotting but also prevents insects.

# Garden and Flower Seeds

INSECTICIDES, SPRAYERS, HOSE, Etc.

Everything for the Garden

We do not pay transportation charges, except where goods are marked postpaid.

## Asparagus

One oz. of seed will produce 300 plants, 1 1/4 lbs. of seed enough plants to set acre.

Soak seeds in hot water before sowing.

Delivery Free. Pkt. Oz. 1/4 lb.

|   |     |     |     |
|---|-----|-----|-----|
| Colossal—A splendid variety; green and of fine quality..... | .05 | .15 | .40 |
| Palmetto—Prolific and of large size; green.....             | .05 | .15 | .40 |
| Columbia Mammoth—White.....                                 | .05 | .10 | .40 |
| Washington Rust Proof.....                                  | .10 | .25 | .75 |

## Table Beets

CULTURE—(45 days)—1 oz. will sow 50 feet of row, 6 lbs. to an acre. Have the rows 16 inches apart moderately thick in the row and later thin out to 4 inches in the row. The thinnings furnish excellent greens. Pkt. Oz. 1/4 lb.

|  |     |     |     |     |
|--|-----|-----|-----|-----|
| Crimson Globe—Extremely tender.....  | .05 | .10 | .25 | .75 |
| Early Egyptian—The old standard—extra early.....   | .05 | .10 | .25 | .75 |
| Early Blood Turnip Beet—A standard medium early variety.....                             | .05 | .10 | .25 | .75 |
| Eclipse Blood Turnip Beet—Extremely early, of uniform globular form; deep red color..... | .05 | .10 | .25 | .75 |
| Detroit Blood Turnip Beet.....   | .05 | .10 | .25 | .75 |
| Half-Long—A half-long blood beet.....  | .05 | .10 | .25 | .75 |
| Long Smooth Blood-Red—An excellent late variety.....                                     | .05 | .10 | .25 | .75 |
| Swiss Chard.....   | .05 | .10 | .75 |     |

## Sugar Beets

One oz. 100 feet to drill. Pkt. 1/4 lb. Lb.

|                                 |     |     |     |
|---------------------------------|-----|-----|-----|
| Klein Wanzleben Sugar Beet..... | .05 | .25 | .65 |
| French White Sugar Beet.....    | .05 | .25 | .65 |

## Beans

CULTURE—Two bushels of seed will plant an acre; 1 quart, or about 2 lbs., will plant a row 100 feet long. Prices shown for Beans do not include transportation charges.

### DWARF, WAX OR YELLOW-PODDED VARIETIES

|  |      |     |
|--|------|-----|
|  | Pkt. | Lb. |
| Imp. Prolific Black Wax—The earliest of the Wax Bean.....      | .10  | .30 |
| Davis White Kidney Wax—Good either green or as a dry bean..... | .10  | .35 |
| Imp. Golden Wax.....   | .10  | .30 |
| Wardwell's Kidney Wax.....                                     | .10  | .30 |
| Pencil Pod Wax.....  | .10  | .30 |

### GREEN BUSH

|                                       |     |     |
|---------------------------------------|-----|-----|
| Dwarf Horticultural or Cranberry..... | .10 | .30 |
| Red Valentine.....                    | .10 | .30 |
| Long Yellow—Six weeks.....            | .10 | .30 |
| Stringless Green Pod.....             | .10 | .30 |
| Refugee.....                          | .10 | .30 |
| Lady Washington (Navy).....           | .10 | .25 |
| Great Northern Navy.....              | .10 | .25 |

## POLE BEANS

|   |                    |
|---|--------------------|
| Kentucky Wonder Wax.....  | Pkg. 10c; lb. 30c. |
| Kentucky Wonder—Also known as Old Homestead. Pkt. 10c; lb. 30                     |                    |
| Lazy Wife—The pods are produced in large clusters in great abundance. 35c per lb. |                    |
| Carmine Pole—Won't blight. 30c lb.  | Pkt. Lb.           |
| Italian or Roman.....   | .10 .30            |
| Oregon Pole Lima.....   | .10 .30            |
| Scarlet Runner.....   | .10 .40            |
| Dutch Case Knife.....   | .10 .30            |
| King of the Garden.....   | .10 .30            |
| Burpee's Bush Lima.....   | .10 .30            |
| Cut Short or Corn Hill.....   | .10 .35            |
| White Seed Kentucky Wonder.....   | .10 .40            |
| Portland Giant Bean.....  | .10 .30            |
| Fordhook Bush Lima.....   | .10 .35            |
| Tall Horticultural.....   | .10 .30            |
| Henderson's Bush Lima.....  | .10 .35            |

## ASPARAGUS POLE BEAN

This is a distinct specie of Beans. The pods are good eating and they really grow 3 feet or even longer. Pkt. 10c; lb. 40c.

## Cabbage

CULTURE—(90 days)—1 oz. of seed will produce 2,000 plants; 8 oz. per acre. Postpaid.

### EXTRA EARLY VARIETIES

|  |      |     |        |
|--|------|-----|--------|
|  | Pkt. | Oz. | 1 Lb.  |
| Copenhagen Market—Round head Danish seed.....  | .10  | .25 | \$2.75 |
| Early Jersey Wakefield—The old standard extra early cabbage. Pointed heads; splendid flavor..... | .05  | .20 | \$2.00 |
| Early Winningstadt.....  | .05  | .20 | \$2.00 |
| Early Express.....   | .05  | .20 | \$2.00 |
| Golden Acre, or Earliest of All.....   | .05  | .35 | \$4.00 |

### SECOND EARLY VARIETIES

|  |      |     |        |
|--|------|-----|--------|
|  | Pkt. | Oz. | 1 Lb.  |
| Early Flat Dutch Variety—Only one week later than the extra early varieties..... | .05  | .20 | \$2.00 |
| Early All Head—A good early flat-headed cabbage of good quality.....             | .05  | .20 | \$2.00 |

### WINTER VARIETIES

|   |      |     |        |
|---|------|-----|--------|
|   | Pkt. | Oz. | 1 Lb.  |
| Surehead—A reliable header and a good keeper.....               | .05  | .20 | \$2.00 |
| Premium Late Flat Dutch—An excellent standard late cabbage..... | .05  | .20 | \$2.00 |
| Large Late Drumhead—A splendid shipper. Heads large, heavy..... | .05  | .20 | \$2.00 |
| Danish Ballhead.....  | .05  | .20 | \$2.25 |
| All Seasons.....  | .05  | .20 | \$2.00 |
| Red Dutch.....  | .05  | .20 |        |
| Chinese Cabbage.....  | .05  | .25 |        |
| Savoy Cabbage.....  | .05  | .30 |        |
| Brussels Sprouts.....   | .05  | .30 |        |



## Cauliflower

CULTURE—1 oz. for 2,000 plants, 1/8 lb. to acre. The culture of cauliflower is similar to that of cabbage. (120 days). Pkt. Oz.

Danish Dry Weather.....15 \$2.00

Snowball—A splendid early variety and a sure header.....15 \$2.00

Early Dwarf Erfurt—Plants dwarf and compact .....15 \$1.75

## Sweet Corn

Prices shown for Corn do not include transportation charges. One lb. for 200 hills; 15 lbs. per acre. (70 days). Pkt. Lb.

Golden Giant .....10 .25

Golden Bantam .....10 .25

Early White Cob Cory.....10 .25

Early Minnesota .....10 .25

Peep o' Day.....10 .25

Flour Corn, Mandan N. D.....10 .20

### LATE VARIETIES

Stowell's Evergreen .....10 .25

Country Gentleman .....10 .25

Black Mexican .....10 .25

Pop Corn—Japanese Hullless .....10 .15

## Carrots

CULTURE—(70 days)—1 oz. for 100-foot row, 4 lbs. for one acre. Carrots are very hardy and can be planted as soon as you stir up from 2 to 3 inches of top soil. Have rows 14 inches apart and thin to 4 inches apart in the rows. Delivered free. Pkt. Oz. 1/4 lb. Lb.

Chantenay, or Model—An excellent stump rooted variety.....05 .10 .30 .85

Oxheart, or Guerande—About 6 ins. long, thick and blunt rooted.....05 .10 .30 .85

Danver's Half-long .....05 .10 .30 .85

White Belgian .....05 .10 .30 .85

Golden Giant—For stock .....10 .30 .85

Long Orange .....05 .10 .30 .85

Coreless .....10 .30 .85

## Celery

CULTURE—(115 days)—1 oz. for about 2,500 plants; 1 lb. required for one acre. Delivered free. Pkt. Oz.

Giant Pascal—Late .....05 .25

Golden Self-Blanching—French. A good standard early variety, blanching easily .05 .30

White Plume—Very early.....05 .25

## Chervil

(Koerbel-Cerfeuil)

A vegetable similar to parsley. Used for flavoring soups and salads, also for garnishing, Pkt. 5c.

### CHIVES—SCHNITTLAUGH

The leaves are used for flavoring soups, scrambled eggs, or are mixed with cottage cheese. Per pkt. 15c; plants, per bunch, 25c.

## Corn Salad

Large Headed Fetticus or Lamb's Lettuce—A small, quick growing salad plant, for late fall, winter and spring use. Pkt. 10c; per oz. 30c.

## Collards

This is a form of cabbage held in high esteem all through the South. 5c pkt; 10c oz.

## Cucumbers

(Colorado Grown)

CULTURE—(65 days)—1 oz. to 50 hills, 2 lbs. per acre. For an early crop plant in hot beds on pieces of sod 6x6 inches and about 3 inches thick. Plant 5 or 6 seeds in the center of each piece and when true leaves appear and danger of frost is over move plants to the field, put them in rows 5 feet apart and 3 feet apart in row.

Postpaid. Pkt. Oz. 1/4 lb. Lb.

Jap Climbing .....05 .15 .40 \$1.25

White Spine, Improved .....05 .15 .40 \$1.25

Early Cluster—Short green variety.05 .15 .40 \$1.25.

Davis Perfection .....05 .15 .30 \$1.00

Gerkin .....10 .....

Telegraph .....25 .....

Chicago Pickling.....10 .15 .40 \$1.00

Snows Perfect .....10 .15 .60 \$1.00

Lemon Cucumber .....10 .30 .....

Early Frame .....05 .15 .40 \$1.25

### WATER CRESS

Water Cress—Packet, 10c.

### CURLED GARDEN CRESS

A small curled plant with a pleasant, slightly pungent flavor. Pkt. 5c; oz. 15c.

## Egg Plant

CULTURE—(125 days)—1 ounce will produce 1,000 plants; 4 lbs to the acre. Sow in hot bed March 20th and at the first sign of true leaves remove to cold frame into rows 6 inches apart.

Pkt. Oz.

New York Improved.....05 .35

Tree Egg Plant.....05 .40

Black Beauty .....05 .35

## Herbs

Anise, Balm, Basil, Caraway, Corlander, Dill, Fennel, Horehound, Lavender, Majoran Sage, Summer Savory, Thyme, Etc. Per pkt. 5c

## Kohl-Rabi

Early Purple—A very desirable sort for forcing or early out-door planting. Pkt. 5c; oz. 25c

Early White Vienna—Is the earliest and best for forcing. Pkt. 5c; oz. 25c

## Kale or Borecole

Kale, or Borecole, is a kind of cabbage that does not form a close and solid head. It requires the same treatment as cabbage. Improved by frost.

Dwarf, Green Curled Scotch.

Tall Green Curled Scotch—Produces an abundance of dark green, curled leaves. Very hardy.

Both varieties of Kale—5c pkt; 15c oz.

Thousand Headed—Pkt. 5c; oz. 10c; 1/4 lb. 30c.

## Lettuce

### CURLED VARIETIES

1 oz. for 3,000 plants. (75 days). Pkt. Oz. 1/4 lb.

Early curled Simpson—A popular market variety for forcing or very early planting outdoors.....05 .15 .40

Grand Rapids—Large, beautifully curled, crisp and tender.....05 .15 .40

Early Curled Silecia—An excellent early curled variety.....05 .15 .40

Black Seeded Simpson.....05 .15 .40

## Lettuce

### HEAD VARIETIES

|   | Pkt. | Oz. | 1/4 lb. | Lb. |
|---|------|-----|---------|-----|
| Crispette .....   | .05  | .15 | .40     |     |
| Prize Head—Brown edge .....                               | .05  | .15 | .40     |     |
| May King .....  | .05  | .15 | .40     |     |
| Hansen Head—Compact and forms<br>cabbage like heads ..... | .05  | .15 | .40     |     |
| Immensity—Tender and crisp .....                          | .05  | .15 | .40     |     |
| Iceberg .....   | .05  | .15 | .40     |     |
| New York, or Wonderful—Best of all .....                  | .05  | .15 | .50     |     |
| Big Boston .....  | .05  | .15 | .40     |     |
| Cos Lettuce .....   | .05  | .15 | ....    |     |

## Leek

Large London, or American Flag—Pkt. 5c; oz. 30c

## Mangels

The great animal food, whose value is only partly recognized.

Mangels, or roots, are firmly established in all European countries where livestock is raised in any considerable numbers.

|                                  | Pkt. | Oz. | 1/2 lb. | Lb. |
|----------------------------------|------|-----|---------|-----|
| Five pounds to the acre .....    |      |     |         |     |
| Giant Yellow, or Gate Post ..... | .10  | .30 | .55     |     |
| Long Red .....                   | .10  | .30 | .55     |     |
| Golden Tankard .....             | .10  | .30 | .55     |     |
| Sludstrop .....                  | .10  | .30 | .55     |     |
| Half Sugar .....                 | .10  | .30 | .55     |     |

## Mustrad

### MUSTARD FOR GREENS

|                       | Pkt. | Oz. |
|-----------------------|------|-----|
| Fordhood .....        | .05  | .20 |
| Southern Curler ..... | .05  | .20 |
| White English .....   | .05  | .20 |
| Chinese .....         | .05  | .20 |

### OKRA OR GUMBO

CULTURE—2 oz. for 100 feet of row, 12 lbs. for one acre. Do not plant until the ground is warm or about corn planting time. Gather the pods while they are young and before they get woody

|                    | Pkt. | Oz. |
|--------------------|------|-----|
| Long Green .....   | .05  | .20 |
| White Velvet ..... | .05  | .20 |

## Muskmelon

CULTURE—(95 days)—2 oz. seed for 50 hills, 4 lbs. for one acre. Postpaid. Pkt. Oz. 1/4 lb. Lb.

|   |     |      |      |        |
|---|-----|------|------|--------|
| Burrell's Gem—Orange color .....  | .05 | .15  | .35  | \$1.00 |
| Rocky Ford or Nettle Gem—<br>The sweet, green flesh melon .....   | .05 | .15  | .35  | \$1.00 |
| Extra Early Hackensack—Large<br>size and attractive appearance;<br>skin is netted; flesh is green ..... | .05 | .15  | .35  | \$1.00 |
| Paul Rose, or Petoskey—Orange<br>in color .....   | .05 | .15  | .30  | \$1.00 |
| Osage—Salmon color .....  | .05 | .15  | .30  | \$1.00 |
| Gold Lined Rocky Ford .....   | .05 | .15  | .35  | \$1.00 |
| Mexican Panama .....  | .05 | .15  | .35  | \$1.25 |
| Montreal Market .....   | .05 | .15  | .35  | \$1.00 |
| Burpee's Spicy—Salmon color .....   | .05 | .20  | .... | ....   |
| Pollock's 10-25 .....   | .05 | .15  | .35  | \$1.00 |
| Wenatchee Giant .....   | .10 | .... | .... | ....   |
| Edward's Perfect .....  | .10 | .20  | .50  | \$1.50 |
| Hearts of Gold (Hoo-Doo) .....  | .10 | .20  | .50  | \$1.50 |
| Cannon Ball .....   | .10 | .15  | .35  | \$1.25 |
| Tip Top .....   | .10 | .15  | .35  | \$1.25 |
| Persian .....   | .10 | .60  | .... | ....   |
| Honey Dew .....   | .10 | .15  | .... | ....   |
| Honey Ball .....  | .10 | .20  | .35  | \$1.50 |
| Large and Yellow .....  | .05 | .15  | .35  | \$1.00 |
| Nixon—Very large .....  | .10 | .25  | .35  | \$1.00 |

## Watermelons

|  | Pkt. | Oz. | 1/4 lb. | Lb.    |
|--|------|-----|---------|--------|
| Rattlesnake .....                                  | .05  | .10 | .35     | \$1.00 |
| Harris Early .....                                 | .05  | .10 | .35     | \$1.00 |
| Kleckley's Sweets .....                            | .05  | .10 | .35     | \$1.00 |
| Improved Kleckley's Sweets (from<br>Georgia) ..... | .05  | .15 | .50     | \$2.00 |
| Tom Watson .....                                   | .05  | .10 | .35     | \$1.00 |
| Florida Favorite .....                             | .05  | .10 | .35     | \$1.00 |
| Fordhook .....                                     | .05  | .10 | .35     | \$1.00 |
| Sweet as Honey .....                               | .05  | .10 | .35     | \$1.00 |
| Chilean Black Seeded .....                         | .05  | .10 | .35     | \$1.00 |
| Cole's Early .....                                 | .05  | .10 | .35     | \$1.00 |
| Black Seeded Angeline .....                        | .05  | .10 | .35     | \$1.00 |
| Irish Grey .....                                   | .05  | .10 | .35     | \$1.00 |
| Volga Winter Melon .....                           | .05  | .20 | ....    | ....   |
| Sweet Heart .....                                  | .05  | .10 | ....    | \$1.00 |
| Halbert's Honey .....                              | .05  | .10 | .35     | \$1.00 |
| Peerless, or Ice Cream .....                       | .05  | .10 | .35     | \$1.00 |
| King and Queen Winter .....                        | .05  | .10 | .35     | \$1.00 |
| Citron Red and White Seeded .....                  | .05  | .10 | .35     | \$1.00 |

### KLONDIKE (From Imperial Valley)

The seed is small. One pound of Klondike will number as many seeds as two pounds of other varieties. The color of the seed is brown, mottled black.—Pkt. 10c; oz. 25c; 1/4 lb. 75c; 1 lb. \$2.00 Postpaid.

## Onions

CULTURE—(100 to 100 days). 1 oz. for 100 ft. of row; 6 lbs. for 1 acre. For sets, 60 to 70 lbs of seed should be sown to the acre, more if the ground is light. Sow the seed early in spring as soon as the ground is in working order, not sticky. For extra large and heavy bulbs, such sorts as Ailsa Craig, Prizetaker, and Bermuda, are sown in hot beds and later transplanted into rows a foot apart and 4 inches apart in the rows.

|   | Pkt. | Oz. | 1/4 lb. | Lb.    |
|---|------|-----|---------|--------|
| Ailsa Craig .....   | .05  | .35 | \$1.20  | \$3.50 |
| Prizetaker—Of immense size,<br>globular shape and good qual-<br>ity. The skin is light yellow .....     | .05  | .25 | .75     | \$2.35 |
| White Queen—A very small,<br>pure white onion; used for<br>pickling and for early green<br>onions ..... | .05  | .25 | \$1.00  | ....   |
| Large Red Weatherfield—Very<br>large onion, flattened in shape .....                                    | .05  | .20 | ....    | \$2.00 |
| Australian Brown—Early; med-<br>ium size; nearly globular in<br>shape .....                             | .05  | .20 | ....    | \$2.00 |
| Yellow Flat Danvers .....   | .05  | .20 | .60     | \$2.00 |
| Yellow Globe Danvers—Early<br>very productive and reliable .....  | .05  | .20 | .75     | \$2.00 |
| White Portugal or Silver Skin<br>—A splendid early flat, white<br>variety .....                         | .05  | .25 | .75     | \$2.25 |
| Southport Red Globe — A very<br>large onion, globular in form .....                                     | .05  | .25 | .75     | \$2.00 |
| Mountain Danvers .....  | .05  | .25 | \$1.00  | \$2.25 |
| Southport Yellow Globe— An<br>excellent large globular onion .....                                      | .05  | .20 | .75     | \$2.00 |
| White Bermuda—Genuine .....   | .05  | .35 | ....    | ....   |
| White Bunching .....  | .10  | .30 | .90     | ....   |
| Southport White Globe .....   | .05  | .25 | \$1.00  | \$2.00 |
| Crystal Wax .....   | .10  | .35 | ....    | ....   |
| Sweet Valencia (Spanish) .....  | .10  | .40 | \$1.00  | ....   |

### ONION SETS

|   |     |
|---|-----|
| Yellow Bottom Per lb. (postage extra) ..... | 15c |
| White Bottom .....                          | 20c |



**PARSLEY**

CULTURE—(60 days)—1 oz. to 100 feet of row.  
Moss Curled—Pkt. 5c; oz. 25c; ¼lb. 45c.

**SALISFY**

Mammoth Sandwich Island—The roots are long, white in color Pkt. 5c; oz. 25c; ¼ lb. 60c.

**Parsnips**

CULTURE—(130 days)—1 oz. to 100 ft. of row, 6 lbs. to the acre. Pkt. Oz. ¼lb. Lb.  
Improved Hollow Crown.....05 .10 .25 .80  
Guernsey Half-long .....05 .10 .25 .80

**Garden Peas**

CULTURE—(50 to 60 days)—3 pints, or 3 lbs. for 100 feet of row, 6 bushels for 1 acre.

Early Varieties—Plant as early in the spring as the ground is thawed out to the depth of about 3 inches, sow by hand very thickly in a trench about 2 inches deep.

**EARLY VARIETIES**

Not Postpaid. Pkt. ½lb. Lb.  
Honey Sweets—15 inches.....10 .20 .35  
Nott's Excelsior—Height 14 inches.....10 .15 .25  
American Wonder—Of dwarfed, compact growth, 10 to 12 inches high.....10 .15 .25  
Premium Gem—15 inches high; a little later than American Wonder.....10 .15 .25  
Alaska—Very early and hardy; 2 feet high.....10 .15 .25  
Thos. Laxton—Three feet.....10 .15 .25  
Gradus—20 inches .....10 .15 .25  
Laxtonian .....10 .15 .25

**LATE OR MAIN CROP VARIETIES**

Yorkshire Hero—Tall .....10 .15 .25  
Dwarf, Telephone, Carter's Daisy—  
Requiring no support.....10 .15 .25  
Strategem—Vines 20 inches high.....10 .15 .25  
Telephone—Height 4½ feet.....10 .15 .25  
Melting Sugar—Tall .....10 .15 .25  
White Marrowfat—Tall .....10 .15 .25  
Champion of England—Tall.....10 .15 .25  
Dwarf Grey Sugar—(Edible pod).....10 .15 .25  
Everbearing .....10 .15 .30  
Dwarf White Sugar.....10 .15 .30

**Peppers**

CULTURE—(125 to 140 days)—1 oz. of seed will produce about 1,500 plants. The culture for pepper is similar to Egg Plant. Have the plants in hot beds 3x2 inches and in the field in rows 3 feet apart and 18 inches apart in the rows. Pepper requires very rich soil. Postpaid Pkt. Oz. ¼lb.  
Chinese Giant .....05 .50 \$1.50  
Ruby King .....05 .35 \$1.00  
Pimento Pepper Seed.....05 .....  
Large Bell or Bull Nose.....05 .35 \$1.00  
Long Red Cayenne—3 or 4 in. long.....05 .25 .....  
Red Chili—Small bright red peppers .05 .35 .....

**Pumpkins**

One ounce for 30 hills; 4 lbs. per acre. Delivered free Pkt. Oz. ¼lb. Lb.  
Sugar or Sweet Pie—small, hand some pie pumpkin.....05 .10 .35 \$1.00  
Connecticut Field — Large orange-colored field pumpkin, generally grown for stock but good for pies .....05 .10 .35 \$1.00  
Japanese Pie .....05 .20 .40 \$1.50

Sweet Potato Pie.....05 .10 .35 \$1.00  
Golden Cushaw—Crookneck sort.....05 .10 .35 \$1.00  
Mammoth King .....05 .10 .35 \$1.00  
Large Cheese .....05 .10 .35 \$1.00

**Rhubarb**

CULTURE—1 oz. for 100 feet of row. Sow in rows 18 inches apart and thin to 6 inches apart in the row. The following spring set out your roots in rows 4 feet apart. Requires very rich soil. Pkt. Oz. ¼lb. Lb.  
Rhubarb—Myatt, Victoria.....05 .15 .50 \$1.40

**Radishes**

CULTURE—(30 days)—1 ounce for 100 feet of row; 12 lbs per acre. Sow as soon as the ground is open, on fairly rich soil.

**EARLY ROUND VARIETIES**

Pkt. Oz. ¼lb. Lb.  
Early Scarlet Turnip Raddish—A popular small, early, bright red turnip shaped radish.....05 .10 .30 .90  
Early Scarlet Turnip White Tip—  
An excellent early round.....05 .10 .30 .90  
French Breakfast—General favorite; oval shape, bright scarlet and white tip .....05 .10 .30 .90  
White Globe .....05 .10 .30 \$1

**EARLY LONG VARIETY**

White Icicle .....05 .10 .30 .90  
White Vienne, or Lady Finger.....05 .10 .30 .90  
Long Bright Scarlet.....05 .10 .30 .90  
Crimson Giant .....05 .10 .30 .90  
China Rose .....05 .10 .30 .90  
Black Spanish, Long—Very hardy and good for winter use.....05 .10 .30 \$1.25  
Chinese White Winter or Celestial (or Cal. Mammoth White Winter) —The well known and popular winter variety .....05 .20 ..... \$1.25  
Long White Japanese—A winter variety, growing frequently two feet long. Skin is white.....10 .30 \$1. \$3.00

**DON'T GROW WORMY RADISHES!** There is no use of it, since we offer "Carco" Vegetable Spray. It will keep the maggots away from the roots and is very inexpensive to use.

**RUTABAGA**

American Purple Top.....05 .10 .30 .85

**Spinach**

CULTURE—(50 to 60 days)—1 oz. for 100 feet of row, 12 lbs. per acre, 15 lbs. to the acre if broadcasted. Plant late in fall or early in the spring as soon as the ground is open. Pkt. Oz. ¼lb. Lb.

Thick Leaved, Improved—For either fall or spring sowing. Produces large, thick, bright green, crumpled leaves .....05 .10 .25 .50  
Long Standing—An excellent compact variety with thick fleshy dark green leaves .....05 .10 .25 .50  
King of Denmark.....05 .10 .30 .75  
Victoria .....05 .10 .25 .50

**NEW ZEALAND SPINACH**

Pkt. 5c; oz. 15c; ¼ lb. 35c; ½ lb. 60c; 1 lb. \$1.00

## Squashes

CULTURE—(60 to 110 days)—1 oz. for 20 to 40 hills, 4 to 6 lbs. to one acre, depending on variety, whether small or large seeded. Pkt. Oz. ¼lb. Lb.

|   |     |       |       |        |
|---|-----|-------|-------|--------|
| Pikes Peak, or Sibley.....                                | .05 | .10   | .35   | \$1.00 |
| Golden Summer Crookneck.....                              | .05 | .10   | .35   | \$1.00 |
| Hubbard (True)—Warted.....                                | .05 | .10   | .35   | \$1.00 |
| Golden Hubbard.....                                       | .05 | .10   | .35   | \$1.00 |
| Mammoth Chili.....  | .05 | .10   | .35   | \$1.00 |
| White Summer Crookneck.....                               | .05 | .10   | .35   | \$1.00 |
| Boston Marrow—Orange color.....                           | .05 | .10   | .35   | \$1.00 |
| Delicious Squash—Large, long,<br>greenish blue color..... | .05 | .10   | .35   | \$1.00 |
| Bush Scallop White—White Patty<br>Pan bush variety.....   | .05 | .10   | .35   | \$1.00 |
| Delicata.....   | .05 | .15   | .35   | \$1.00 |
| Table Queen (Des Moines).....                             | .10 | .25   | .35   | \$1.25 |
| Mammoth Whale.....  | .10 | ..... | ..... | .....  |
| Mammoth Yellow Bush.....                                  | .10 | ..... | ..... | .....  |
| Marblehead.....   | .05 | .10   | .35   | \$1.00 |
| Fordhook.....   | .05 | .10   | .35   | \$1.25 |

### VEGETABLE MARROW

Vegetable Marrow—English. Pkt. 10c.

## Turnips

CULTURE—(45 to 125 days)—½ oz. for 100 ft. of row, 1¼ lbs. per acre. If sown broadcast use 2 pounds to the acre. RUTABAGAS should be sown 18 inches between the rows and thinned out to 6 inches in the row. It must be sown early in the spring. Pkt. Oz. ¼lb. Lb.

|  |     |     |     |     |
|--|-----|-----|-----|-----|
| Cow Horn.....                              | .05 | .10 | .25 | .75 |
| Early Flat Dutch.....                      | .05 | .10 | .25 | .75 |
| Purple Top White Milan—Extra<br>early..... | .05 | .10 | .25 | .75 |
| Purple Top Strap Leaf.....                 | .05 | .10 | .25 | .75 |
| Orange or Golden Ball.....                 | .05 | .10 | .25 | .75 |
| White Egg.....                             | .05 | .10 | .25 | .75 |
| White Globe.....                           | .05 | .10 | .25 | .75 |
| Snow Ball.....                             | .05 | .10 | .25 | .75 |
| Seven Top—For greens.....                  | .05 | .10 | .25 | .75 |
| Yellow Aberdeen.....                       | .05 | .10 | .25 | .75 |

RAISE NO MORE WORMY TURNIPS! Use "Car-co"—1 part to 125 parts of water.

## Tomatoes

CULTURE—(130 days) 1 ounce will produce about 3,000 plants, 4 oz. for 1 acre. Sow in hot beds about March 1st, in rows 3 inches apart, transplant when 2 inches high into cold frames. When plants are about 6 inches high set out into the field.

|   |                   |       |             |       |
|---|-------------------|-------|-------------|-------|
| Delivery Free.....  | Pkt. Oz. ¼lb. Lb. |       |             |       |
| Husk Tomato, or Ground Cherry<br>yellow.....                                      | .05               | ..... | .....       | ..... |
| Dwarf Champion, or Tree.....  | .05               | .35   | \$1. \$3.50 |       |
| Golden Queen.....   | .05               | .35   | \$1. \$3.50 |       |
| Bonney Best Select—First for<br>choice, fine for Wenatchee;<br>early scarlet..... | .05               | .35   | \$1. \$3.50 |       |
| Ponderosa—Immense size, finest<br>quality, purplish ermine.....                   | .05               | .40   | 1.25 \$5.00 |       |
| Stone—All around red tomato,<br>main crop.....                                    | .05               | .35   | \$1. \$3.50 |       |
| Earliana—Earliest food variety<br>grown.....                                      | .05               | .35   | \$1. \$3.50 |       |
| Yellow Pear.....  | .05               | .30   | .....       | ..... |
| John Baer—Bright red, very fine.....  | .05               | .34   | \$1. \$3.50 |       |
| Chalks Early Jewel.....   | .05               | .25   | \$1. \$3.00 |       |
| Early Michigan.....   | .05               | .25   | \$1. \$3.50 |       |
| June Pink.....  | .05               | .35   | \$1. \$3.50 |       |

|                             |     |       |             |
|-----------------------------|-----|-------|-------------|
| Livingston Globe.....       | .05 | .35   | \$1. \$3.00 |
| Red Head.....               | .10 | .40   | .....       |
| Marglobe.....               | .10 | .50   | .....       |
| Topepto, Tomato-Pepper..... | .25 | ..... | .....       |

### MAKE YOUR ROADSIDE MARKET ATTRACTIVE

For 50c we will mail a collection of Flower Seeds, or for \$1.00 we will send a collection of Plants that will make you proud of your place.

## FIELD SEEDS

### GRIMM ALFALFA

This is probably the best known and most talked of variety. No other strain of Alfalfa is as hardy as true Grimm. Because of its extreme hardness it is being grown extensively where winter killing is a serious factor. If you have a high water level or hard pan to contend with, Grimm is the proper type to use. Our Grimm comes in bags sealed and tagged under government supervision. This insures a true, genuine, Grimm type. According to tests at the Montana State Experiment Station, the Minnesota station, and one of the Canadian stations, Grimm proved hardier than any other strain under their conditions. The crown is set lower than on Common Alfalfa and hardness is bred right into the plant. Use 12 to 15 lbs. per acre.

### Montana Alfalfa

Of all the Common strains Montana grown Alfalfa seed is considered by all agricultural authorities to be one of the hardiest. As it is grown west of the Dakotas it is acclimated to the severe winters of that territory. Over a period of years the Montana State Agricultural College has shown in its test plots that Montana Alfalfa is the king of all common strains. The seed is big, plump, a beautiful color, and dodder free. Seed at rate of 15 to 20 lbs. per acre.

|  |        |
|--|--------|
| Montana Registered Grimm—Red Tag, lb.....  | 55c    |
| Montana Peerless Dryland, lb.....          | 38c    |
| Montana Hardy.....                         | 35c    |
| Turkestan.....                             | 33c    |
| White Sweet Clover (Sacrifice) per lb..... | 16c    |
| Yellow Clover (Sacrifice) per lb.....      | 17c    |
| Alsike.....                                | 40c    |
| Vetch, Winter Hairy, per lb.....           | 18c    |
| Sorgum Amber, per lb.....                  | 15c    |
| Sunflower, per lb.....                     | 15c    |
| Kentucky Blue Grass, per lb.....           | 60c    |
| Brome Grass, per lb.....                   | 23c    |
| Feterita.....                              | 15c    |
| Kaffir Corn.....                           | 15c    |
| White Clover (Dutch) per lb.....           | 60c    |
| Milo Maize.....                            | 15c    |
| Sudan Grass.....                           | 16c    |
| Red Clover.....                            | 45c    |
| Orchard Grass.....                         | 30c    |
| Broom Corn.....                            | 15c    |
| Rhode Island Bent.....                     | \$1.50 |

### FIELD PEAS

|               |        |
|---------------|--------|
| 100 lbs. .... | \$8.00 |
|---------------|--------|

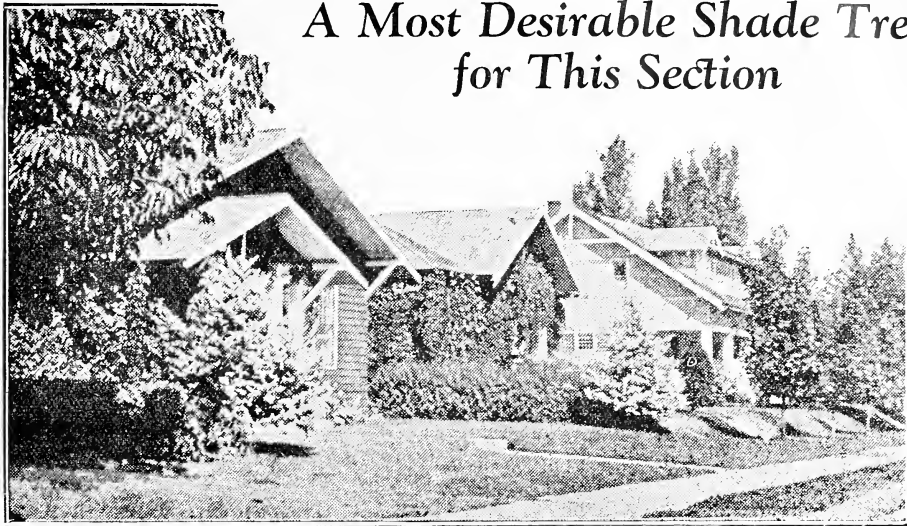
### FIELD CORN

|   |        |
|---|--------|
| Pride of The North—100 lbs.....           | \$8.00 |
| Field Corn (Minnesota No. 13) per lb..... | 10c    |

## Cel-O-Glass

Cel-O-Glass is sold in rolls 3 feet wide and in any length up to 100 linear feet. Use it for garage and barn doors and windows, cellar windows, storm doors and most any place where you are now using glass.

Price, per roll, 100x3 ft., per square foot.....15c



## A Most Desirable Shade Tree for This Section

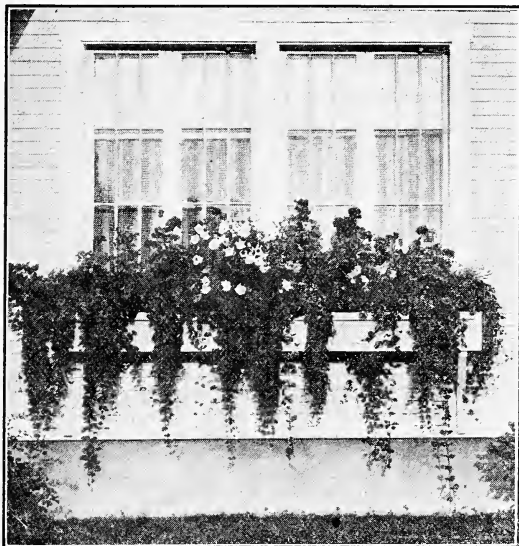
### Chinese or Siberian Elm--Plant It!

Probably the most valuable tree recently introduced is the Chinese or Siberian Elm. It bids fair to supercede all other trees, especially in the central and western portions of this country. It was introduced from China and distributed by the government some time ago and reports are coming in that are truly astonishing.

In appearance the Chinese Elm differs as much from the other elms as in habits of growth. A much more graceful tree, its foliage is dense and a rich green color and does not brown or turn rusty, and remains on the trees several weeks after the others have fallen off. It is the first tree to put on foliage in the spring and the last to lose its leaves in the fall. In the southern states it is almost an evergreen.

We have grown this tree in our nurseries for the past three years, where it outgrew American Elm three to one, and are thoroughly convinced that it is all it is said to be and more. A good street tree—shade and ornamental. Will grow in wet or dry places. You will like it. The fastest growing and most graceful tree you can buy.

Price—5 feet, \$1.00; 6 to 8 feet, \$1.75; 8 to 10 feet, \$2.50 each.



A Milot-Mills Window Box 60 Days After Planting

## WENATCHEE FOLKS!

Prizes will be awarded  
to the  
Best Kept Lawn  
The Most Colorful Planting  
Shrubs, Perennials,  
Annuals, Window Boxes

\* \* \* \* \*

Nothing adds more to the beauty of your lawn than a well planted Window Box. Let us do it. Your soil must be right.

The Kiwanis Club is sponsoring this City Beautiful Campaign thru the Chamber of Commerce "City Affairs Committee." Start now—we will help you.

Milot-Mills Landscape Dept.

# Flower Seeds - Per Package 10c

## Classification of Flower Seeds for Special Purposes

This page is intended to aid you in the selection of seeds that you may have flowers for every purpose.

### FLOWERING ANNUALS, ALSO PERENNIALS WHICH FLOWER FIRST SEASON FROM SEED. Varieties Marked \* Are Best for Beds and Masses.

- |                |                |                |
|----------------|----------------|----------------|
| Aubritia       | *Dianthus      | Nasturtium     |
| Acroclinium    | *Dimorphotheca | Nemesia        |
| *African Daisy | *Eschscholtzia | Nemophila      |
| *Ageratum      | *Gaillardia    | Nicotina       |
| *Alyssum       | Geranium       | Nigella        |
| *Antirrhinum   | *Godetia       | Oenothera      |
| Arctotis       | Gomphrena      | *Pansy         |
| *Asters        | Gypsophila     | *Petunia       |
| Balsam         | Helianthus     | *Phlox         |
| *Bartonia      | Helichrysum    | *Poppy         |
| Begonia        | Hollyhock      | *Portulaca     |
| Bellis         | (Annual)       | Rhodanthe      |
| Brachycome     | Hunnemannia    | Rudbeckia      |
| *Calendula     | Ice Plant      | Salpiglossis   |
| *Calliost      | Kochia         | *Salvia        |
| *Candytuft     | *Larkspur      | Scabiosa       |
| Canna          | Lavatera       | Schizanthus    |
| Carnation      | Linum          | *Silene        |
| *Celosia       | Lobelia        | Stevia         |
| Centaurea      | Lupinus        | *Stocks        |
| *Chrysanthemum | Marigold       | Sunflower      |
| (Annual)       | Marvel of Peru | Sweet Peas     |
| Clarkia        | Matricaria     | *Verbena       |
| *Convolvulus   | Matthiola      | Vinca Rosea    |
| Cosmos         | Mignonette     | *Viola Cornuta |
| Dahlia         | Mimulus        | (Annual)       |
| Datura         | Mirabilis      | *Zinnia        |
| Viscaria       | Myosotis       | Wallflower     |

### FLOWERING PERENNIALS

For Permanent Beds and Borders, Many Flowering the First Season.

- |                  |                |               |
|------------------|----------------|---------------|
| Agatheia         | Dianthus       | Petunia       |
| Anchusa          | Digitalis      | Phlox         |
| Anemone          | (Foxglove)     | Poppy         |
| Antirrhinum      | For-Get-Me-Not | Primula       |
| Aconitum         | Freesia        | Pyrenthrum    |
| Aquilegia        | Gaillardia     | Ricinus       |
| Begonia          | Geranium       | Romneya       |
| Bellis           | Gerbera        | Salvia        |
| Canterbury Bells | Geum           | Scabiosa      |
| Campanula        | Gypsophila     | Shasta Daisy  |
| Canna            | Heliotrope     | Statice       |
| Carnation        | Hollyhock      | Stevia        |
| Centaurea        | Hunnemannia    | Stocks        |
| Candidissima     | Lantana        | Snapdragon    |
| Chrysanthemum    | Lobelia        | Sweet William |
| Coreopsis        | Lupinus        | Valeriana     |
| Cyclamen         | Mimulus        | Verbena       |
| Daisy            | Myosotis       | Vinca         |
| Dahlia           | Pansy          | Viola         |
| Delphinium       | Pentstemon     | Wallflower    |

### FOR SHADY PLACES

- |             |              |           |
|-------------|--------------|-----------|
| Anemone     | Clarkia      | Myosotis  |
| Antirrhinum | Cineraria    | Oenothera |
| Aquilegia   | Cyclamen     | Pansy     |
| Begonia     | Delphinium   | Primula   |
| (Tuberous)  | Scarlet Flax | Viola     |
| Bellis      | Foxglove     | Violets   |
| Daisy       | Godetia      | Ferns     |
|             | Mimulus      |           |

### EVERLASTING FLOWERS

- |                 |                 |             |
|-----------------|-----------------|-------------|
| Ammobium        | Gysophila       | Rhodanthe   |
| Acroclinium     | Paniculata      | Statice     |
| Gomphrena       | Helichrysum     | Xeranthemum |
| (GlobeAmaranth) | OrnamentGrasses |             |

### FOR CUT FLOWERS

- |               |             |              |
|---------------|-------------|--------------|
| Acroclinium   | Coreopsis   | Mignonette   |
| Antirrhinum   | Cosmos      | Pentstemon   |
| Aquilegia     | Dahlia      | Poppies      |
| Asters        | Daisies     | Pyrethrum    |
| Candytuft     | Delphinium  | Salpiglossis |
| Carnation     | Dianthus    | Salvia       |
| Arctotis      | Gaillardia  | Scabiosa     |
| Bartonia      | Gerbera     | Schizanthus  |
| Branchycome   | Gypsophila  | Statice      |
| Calendula     | Hunnemannia | Stevia       |
| Calliopsis    | Larkspur    | Stocks       |
| Celosia       | Lupinus     | Sunflower    |
| Centaurea     | Marigold    | Sweet Peas   |
| Chrysanthemum | Matricaria  | Zinnias      |

### ORNAMENTAL AND FOLIAGE PLANTS

- |            |              |           |
|------------|--------------|-----------|
| Amaranthus | Centaurea    | Pyrethrum |
| Canna      | Candidissima | Ricinus   |
| Coleus     | Kochia       |           |

### FRAGRANT FLOWERS

- |            |                   |               |
|------------|-------------------|---------------|
| Abronia    | Dianthus          | Scabiosa      |
| Alyssum    | Heliotrope        | Stocks        |
| Centaurea  | Mathiola          | Sweet Peas    |
| Carnation  | Mignonette        | Sweet William |
| Clematis   | Mimulus           | Violet        |
| Paniculata | Nicotiana Affinis | Wallflower    |
|            | Pansy             |               |

### FOR HANGING BASKETS, WINDOW BOXES

#### DROOPING

- |           |                |            |
|-----------|----------------|------------|
| Alyssum   | Convolvulus    | Petunia    |
| Asparagus | Kenilworth Ivy | Smilax     |
| Sprengeri | Lobelia        | Thumbergia |
|           | Nasturtium     |            |

#### UPRIGHT

- |           |            |             |
|-----------|------------|-------------|
| Ageratum  | Coleus     | Primulas    |
| Begonia   | Geranium   | Vinca Rosea |
| Candytuft | Heliotrope | Viola       |
|           | Pansy      |             |

### FOR EDGING AND BORDER

- |                |                  |                  |
|----------------|------------------|------------------|
| Ageratum       | Dianthus         | Pansy            |
| Alyssum        | Dimorphotheca    | Phlox Drummondii |
| Asters (Dwarf) | Gomphrena        | Petuna Nana      |
| Begonia        | Kochia           | Erecta           |
| Bellis         | Lobelia          | Pyrethrum        |
| Candytuft      | Marigold (Dwarf) | Shasta Daisy     |
| Centaurea      | Myosotis         | Sweet PeasCupid  |
| Candidissima   | Nasturtium       | Viola            |
| Coleus         | Nemophila        | Zinnia (Dwarf)   |

### CLIMBING VINES

#### ANNUAL

- |                  |                  |               |
|------------------|------------------|---------------|
| Balloon Vine     | Cypress Vine     | Mina Lobata   |
| Balsam Apple     | Japanese Hop     | Nasturtium    |
| Balsam Pear      | Hyacinth Bean    | ScarletRunner |
| Canary Bird Vine | Ipomoea          | Sweet Peas    |
| Cardinal Climber | Papanese Morning | Thumbergia    |
| Convolvulus      | Glory            | Wild Cucumber |

#### PERENNIALS

- |                   |                 |               |
|-------------------|-----------------|---------------|
| Ampelopsis        | Coboea Scandens | Smilax        |
| Antigonon (Bulbs) | Lathyrus        | Maderia Vine  |
| Asparagus         | Ipomoea         | (Bulbs)       |
| Australian Pea    | Mandevilla      | Wisteria      |
| Vine              | Mina Lobata     | Cinnamon Vine |
| Clematis          | Moon Vine       | (Bulbs)       |
|                   | Passiflora      |               |

## SPENCER SWEET PEAS

- |   |     |  |
|---|-----|--|
| Firey Cross—Bright rose, wing primrose..... | Oz. |  |
| White Spencer—Finest strain.....            | 25c |  |
| King Edward VII—Pure red.....               | 25c |  |
| Illuminator—Orange scarlet.....             | 25c |  |
| Helen Lewis—Orange scarlet.....             | 25c |  |
| Countess Spencer—Clear pink.....            | 25c |  |
| Margaret Atlee—Salmon and Cream.....        | 25c |  |
| Asta-O-Hue—Lavender.....                    | 25c |  |
| Captain of the Blues.....                   | 25c |  |

- |                                       |     |  |
|---------------------------------------|-----|--|
| Wedgewood—Lavender.....               | Oz. |  |
| Primrose.....                         | 25c |  |
| Spencer Sweet Peas—Mixed.....         | 20c |  |
| Grandiflora Sweet Peas—Mixed.....     | 10c |  |
| Burpee's Early Flowering—Package..... | 10c |  |

We have a complete assortment of Vegetables and Flower Seeds—but should you not find just what you want, kindly bring or send in your list and we will secure them for you.

## Peanuts

**CULTURE.**—Peanuts require light sandy soil, well limed. Plant in the spring as soon as the ground has become warm, in rows 30 to 36 inches apart, placing the seed 6 to 10 inches apart in the row. It is not necessary to remove the hull when planting. Keep well hoed. When matured pull and hang up to dry.

**VALENCIA**—A very desirable and productive Spanish bush type. Mild, sweet flavored. Per pound, 35c. postpaid.

## Mulford Culture for Legumes

Mulford Cultures are easily applied to the seed before planting and contain pure tested strains of active, vigorous nitrogen fixing bacteria, for inoculating seeds of legumes or soil. Enormous numbers of these very valuable bacteria are thus available to you in every package of Mulford Culture and may readily be applied to your seed. The sealed bottle insures purity.

**PRICES**—Alfalfa, Red Clover, White Clover, Alsike, Vetch, Peas, Beans, 1/2 bu., 60c; 1 bu., \$1; 2 1/2 bu. \$2.25.

Special small size for Sweet Peas, Garden Peas, and Beans, 35c.

Always specify on your order what crop you want to inoculate, as there is a different strain of bacteria for each legume.

## KEEP YOUR LAWN MOWER SHARP



You can do it yourself easily and quickly with a Bergman Lawn Mower Sharpener. It is adjustable and lasts forever. A few strokes on each blade and your mower cuts like new. To keep your lawn mower in shape this summer SEND for this handy sharpener: TODAY—

Price, \$1.00

### CLAY FLOWER POTS

|                   |     |                    |       |
|-------------------|-----|--------------------|-------|
| 3 inch, each..... | .05 | 7 inch, each.....  | \$.25 |
| 4 inch, each..... | .08 | 8 inch, each.....  | .30   |
| 5 inch, each..... | .10 | 10 inch, each..... | .70   |
| 6 inch, each..... | .15 | 12 inch, each..... | 1.10  |

Saucers, one-half price of pots.

## Paper Pots

Prevent disturbing the roots. Sow seed of Melon, Cucumber and Squash. When seed is up, place pot and all in ground.

|                |        |        |
|----------------|--------|--------|
| Size—          | 100    | 1,000  |
| 2 1/2 in. .... | \$1.00 | \$7.50 |
| 3 in. ....     | 1.50   | 9.50   |
| 4 in. ....     | 2.50   | 13.50  |

(Not prepaid)



Germaco  
**Hotkaps**  
New Method of  
Plant Protection

## Hot-Kap Paper Plant Covers

Because of the convenience of setting the Hot-Kap Cover, it has become very popular. So constructed that the wind cannot blow them away, because the machine places dirt around the edges. They are already folded ready for use. One man can do the work of four. After setting the field looks uniform, like a well kept garden. Eleven inches in diameter at base for tomatoes, egg plant.

**HOT-KAP PRICES**—Per 5,000, @ \$11 per 1000; per 1,000, \$11.50; 500, \$6.00; 100, \$1.25; per doz, 20c. Postpaid

## Stanley's Bird Repellent

is one sure cure for troublesome birds. Not only birds, but moles, squirrels and all pests will leave your corn fields severely alone if you coat your seed corn with it just before planting. You don't have to wait for it to dry, and it positively will not clog the planter. It is not poisonous and, therefore, will not kill birds or animals, but it WILL keep your cornfields free from damage that runs into money and time, if you have to keep replanting all the time. Large can, enough for 2 bushels of seed corn (8 to 10 acres), \$1.50; half-size can, \$1.00.

## Field, Farm, Grass and Clover Seeds---Quantity per Acre

|                                     |                      |                                      |                                      |
|-------------------------------------|----------------------|--------------------------------------|--------------------------------------|
| Alfalfa .....                       | 12 to 15 lbs.        | Rye Grass—for Pasture.....           | 20 to 30 lbs.                        |
| Artichokes .....                    | 400 to 600 lbs.      | Rye Grass—for Lawns.....             | 100 lbs.                             |
| Barley---(drills, 75 lbs.).....     | broadcast 100 lbs.   | Sudan---drills .....                 | 3 to 5 lbs.                          |
| Buckwheat---(drills, 35 lbs.).....  | broadcast 50 lbs.    | Sudan---broadcast .....              | 16 to 20 lbs.                        |
| Cheat .....                         | 75 to 100 lbs.       | Kaffir Corn---Drills .....           | 6 to 10 lbs.                         |
| Clover---Alsike and White.....      | 6 to 8 lbs.          | Millet .....                         | 20 to 30 lbs.                        |
| White for lawn.....                 | 1 lb. to 20 sq. feet | Oats---For Seed .....                | 75 to 100 lbs.                       |
| Crimson .....                       | 15 to 20 lbs.        | For Hay .....                        | 100 lbs.                             |
| Red .....                           | 10 to 12 lbs.        | Potatoes---(60 lbs. per bushel)..... | 15 to 18 bu.                         |
| Sweet .....                         | 15 to 20 lbs.        | Rape---(drills 3 lbs.).....          | broadcast 5 lbs.                     |
| Corn, Field---Hills .....           | 10 to 12 lbs.        | Rye---for Grain .....                | 60 to 75 lbs.                        |
| For Fodder, drills .....            | 50 lbs.              | For turning under.....               | 100 lbs.                             |
| Flax .....                          | 35 to 45 lbs.        | Speltz or Emmer.....                 | 80 lbs.                              |
| Grass, Kentucky Blue---Pasture..... | 25 to 30 lbs.        | Sugar Cane .....                     | 10 to 12 lbs.                        |
| Kentucky Blue---for Lawns.....      | 1 lb. to 15 ft. sq.  | Sunflower .....                      | 5 to 7 lbs.                          |
| Mixed Lawn .....                    | 1 lb. to 15 ft. sq.  | Timothy .....                        | 10 to 12 lbs.                        |
| Red Top---Hulled, Solid Seed.....   | 8 to 15 lbs.         | Vetcha.....                          | 80 lbs. or 60 lbs. with 40 lbs. Oats |
| Orchard .....                       | 25 to 30 lbs.        | Vetch---Hairy or Sand.....           | 30 lbs.                              |
| Brome Grass .....                   | 20 to 30 lbs.        | Wheat .....                          | 90 to 120 lbs.                       |

## Suitable Distance for Planting Trees and Plants

**NOTE.**—Depending on method of cultivation. In planting in the home garden for hand cultivation you can set plants or trees closer.

|                           |              |                                       |                   |
|---------------------------|--------------|---------------------------------------|-------------------|
| Apples, Standard .....    | 25 to 35 ft. | Walnuts .....                         | 40 to 50 ft.      |
| Apples, Dwarf .....       | 10 to 12 ft. | Currants and Raspberries.....         | 3 by 6 ft.        |
| Pears, Standard .....     | 20 to 25 ft. | Gooseberries .....                    | 4 by 6 ft.        |
| Pears, Dwarf .....        | 10 ft.       | Strawberries, Matted Rows.....        | 2 1/2 by 4 ft.    |
| Peaches and Apricots..... | 18 to 22 ft. | Asparagus, in beds.....               | 1 by 1 1/2 ft.    |
| Cherries, Sweet .....     | 30 to 35 ft. | Asparagus, in field.....              | 1 by 4 ft.        |
| Cherries, Sour .....      | 18 to 22 ft. | Rhubarb .....                         | 3 by 6 ft.        |
| Plums and Prunes.....     | 20 to 25 ft. | Logans, Cory Blackberries, and Grapes | 6 to 9 ft. apart  |
| Quinces .....             | 15 to 18 ft. | Rows .....                            | 6 to 10 ft. apart |
|                           |              | Plants in the Row.....                | 6 to 10 ft. apart |

# Garden Tools, Sprayers, Plant Foods, Etc.

## Handy Garden Tools



Moe's Steel Trowel. Price, postpaid.....30c



Moe's Steel Transplanter. Price postpaid 30c

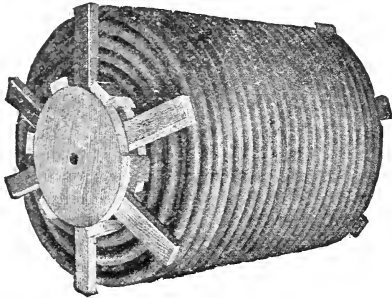


Moe's Claw Weeder. Price, postpaid.....30c



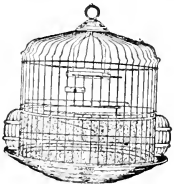
Moe's Knife Weeder. Price, postpaid.....20c

## Garden Hose



First Class Rubber Hose—Such as we use in the greenhouses. Any length you wish, size 3/4-in. Per foot .....16c  
Couplings, 25c extra.

## Bird Cages and Stands



BIRD CAGE STANDS  
CAGE SPRINGS AND BRACKETS  
CUTTLEBONE HOLDERS, ETC.  
SEED CUPS, ETC.



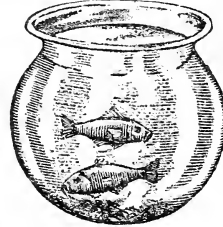
BUILT TO LAST A LIFETIME

GUARANTEES WEEDLESS LAWNS  
U. S. PAT. JUNE, 1913

"IT PULLS 'EM OUT BY THE ROOTS. THEY CAN'T COME BACK"—Price \$1.25.

## Gold Fish

Fish Food .....15c tin.  
Gold Fish, each.....15c, 25c to \$1.00  
Fish Moss, per bunch, postpaid.....20c



FISH BOWLS—Write for Prices.  
QUARTS — HALF-GALLONS — GALLONS

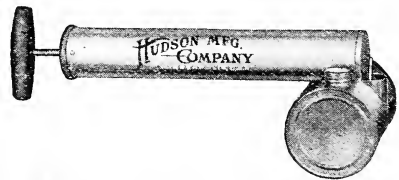
## Fountain Sprinklers

"Twin Sprinkler"—Made of zinc metal and can not rust. Will cover the lawn evenly for 16 feet radius. Very popular. Postpaid. Price, 40c.  
Fan Sprinkler—Throws water in one direction only. Very popular. Postpaid.....Price 40c.

## Sprayers



The "Misty" Sprayer is used to apply all kinds of insecticides on plants, etc. Unsurpassed for applying all kinds of stock dips and fly killer on cattle and horses; also for disinfecting poultry houses, barns, etc. Made of good tin and holds 1 quart. Price, each 60c; postpaid 75c.



Hudson's Misty—Quarts. Each.....60c



Hudson's Fog—Pints. Each.....50c  
Continuous—Quarts. Each.....85c  
Corono Duster. Each.....\$1.00  
Duster Brown No. 2B—Pints. Each.....\$1.00  
Duster Brown No. 2B—Quarts. Each.....\$2.00  
(Please allow for postage)

## Vases, Jardiniers, Flower Holders, Etc.

Baskets with fillers and for plants. Ribbons and Chiffons.



## Spraying and Dusting

### FOR CABBAGE WORMS

Spray or dust with Arsenate of Lead and Soap, or Slugshot.

### CELERY AND TOMATO BLIGHT

Spray or dust with Bordeaux Mixture.

### CORN EAR WORM

As soon as silk appears, spray with Arsenate of Lead and Sulphur.

### VINE CROPS

Spray with Bordeaux Mixture and Arsenate of Lead.

### GREEN AND BLACK APHIS

Spray with "Blackleaf 40."

### RED SPIDER AND WHITE FLY

—on rose bushes and climbing vines. Spray hard on under side with cold water, but always before noon to avoid mildew.

## Grafting Wax for This Climate

|                       |     |
|-----------------------|-----|
| Suyders, per lb.....  | 60c |
| Dandos, per lb.....   | 60c |
| Russell's per lb..... | 60c |
| Four lb. lots.....    | 50c |

Write for prices on larger quantities. Please add postage.

### CLAY HANGING BASKETS

|               |        |
|---------------|--------|
| 10 inch ..... | 75c    |
| 12 inch ..... | \$1.50 |

## Raffia

In ordering Raffia by mail, be sure to add the postage.

Raffia—Natural color. Price ¼ lb. 20c; postpaid 25c; not postpaid, per lb. 50c.



### ODORLESS—CLEAN—EFFICIENT

For Lawns, Gardens, Shrubs, House Plants, Fields and Orchards

BOOK FREE. Tells just how. Sold only in 25-lb. cotton bags, \$2.75; 2 lb. pkgs., 45c

A 25-lb. bag covers a lawn space of 1,200 square feet. Lasts a year or more. A tablespoonful to a hill of potatoes, tomatoes or ordinary rose bush means abundant flowers, crisp, early vegetables.

A Tablespoonful for 6 to 8-inch potted plants. Positively kills cut worms.

## STIM-U-PLANT

STIM-U-PLANT TABLETS are an ideal food for potted plants; they are clean; they take up small space, and one-quarter of a tablet is enough to use at a time on small plants.

### EASY TO USE

Simply insert in soil near plants, or dissolve in water at the rate of four tablets to the gallon and apply as a liquid manure. 30 tablets, 25c; 100 tablets, 75c; 1,000 tablets, postpaid, \$3.50.

## Sheep Manure

For general use for garden spots and beds, etc., use 50 lbs. to 300 sq. feet; for top dressing old lawn use 100 lbs. to 700 sq. feet of space. For preparing soil for new lawn, use 100 lbs. to 300 sq. feet. Price, sack \$1.50; ½ sack, 85c; ¼ sack, 50c; f. o. b., Wenatchee.

## Vigora

Specially prepared plant food for lawns, gardens, flowers, shrubbery, trees and plants.

Vigora is easy to apply. Simply sow it by hand like grass seed or apply it with a kitchen colander. For large areas a plantfood distributor will save time and make a more even distribution.

Vigora is clean, dustless, weedless, and odorless, packed in heavy white paper lined bags in convenient sizes. These unusual features make it possible for you to keep a supply on hand at all times. You can then feed all of your plants at regular and frequent intervals. Full directions for applying are contained in every bag.

Vigora should be used at the rate of four pounds per 100 square feet (10 ft. x 10 ft.) in the spring and fall. The table below shows the amount of Vigora ordinarily needed for the different sized lots for spring and fall feeding. For summer feeding use one-half the amounts shown.

| Size of Lot. | Needed   | Size of Lot.  | Needed    |
|--------------|----------|---------------|-----------|
| 30 x 125 ft. | 50 lbs.  | 100 x 150 ft. | 350 lbs.  |
| 50 x 125 ft. | 125 lbs. | 150 x 150 ft. | 550 lbs.  |
| 75 x 150 ft. | 250 lbs. | 200 x 300 ft. | 1600 lbs. |

Allowance has been made for the average space occupied by the house, garage, sidewalks, etc.

Vigora is not to be compared with any other plant food you have ever known. It isn't at all costly. Prices F. O. B. Wenatchee.

100 lb. bag, \$600; 50 lb bag, \$3.75; 25 lb. bag, \$2.00; 5 lb. bag, 60c.

## Milot-Mills Golden Roller Bird Seed

|  |     |
|--|-----|
| One pound (not prepaid).....                   | 20c |
| Bird Baths, Seed and Water Cups, each.....     | 15c |
| PHILADELPHIA BIRD SEED AND REMEDIES            |     |
| Best Mixed, per lb., postpaid.....             | 30c |
| Canary best re-cleaned, per lb., postpaid..... | 20c |
| Hemp, per lb., postpaid.....                   | 20c |
| Millet, per lb., postpaid.....                 | 15c |
| Rape, per lb., postpaid.....                   | 20c |
| Sunflower Seed, bulk, per lb., postpaid.....   | 20c |
| Mexican Salve, per box.....                    | 25c |
| Mite Powder, per box.....                      | 25c |
| Moulting Food, per box.....                    | 15c |
| Nestling Food, per box.....                    | 25c |
| Nestling Hair, per pkg.....                    | 10c |
| Bird Manna, per pkg.....                       | 15c |
| Bird Gravel, per pkg.....                      | 15c |
| Spratt's Sing Song, per pkg.....               | 15c |
| Fish Food, per box.....                        | 10c |
| Cuttle Bone, each.....                         | 10c |
| Song Restorer.....                             | 25c |
| High Balls.....                                | 15c |
| Manna.....                                     | 15c |

### GEISLER'S BIRD SEED AND REMEDIES

#### DUSTING SULPHUR

Prevents Mildew, and is a summer dust spray for insects and fungus diseases. Pound 15c; postpaid, 25c.

## Poultry Food and Remedies

|  |                                      |             |
|--|--------------------------------------|-------------|
| Lee's Germozone (liquid) 4-oz. size        | 40c; 12-oz. bottle 75c; tablets..... | 25c and 75c |
| White Diarrhoea Remedy, 12-oz. bottle..... |                                      | 50c         |
| Egg-o-Latum, 2-oz. jar.....                |                                      | 50c         |
| Lee's Louse Powder, 1-lb. pkg.....         |                                      | 30c         |
| Lee's Lice Killer, 1-qt. size.....         |                                      | 60c         |
| Lee's Flyo Curo, 1-qt. size.....           |                                      | 60c         |
| Lee's Worm Powder, 1-lb. size.....         |                                      | 35c         |
| Lee's Best Conditioner, 2-lb. pkg.....     |                                      | 50c         |
| Head Lice Ointment, 2-oz. cans.....        |                                      | 15c         |
| Lee's Egg Maker, 2-lb. pkg.....            |                                      | 50c         |
| Poultry Pepper, pkg.....                   |                                      | 25c         |

(Add postage)

### NEW METHOD OF LICE CONTROL

Blackleaf 40, a tobacco by-product containing approximately 40 per cent of nicotine sulphate, is now regarded as an effective means of controlling lice on poultry, according to the Missouri College of Agriculture.

Directions for its use state that it should be applied to the top of roosts with a paint brush or spread with an oil can shortly before fowls go to roost. Fumes given off by the material penetrate the feathers and kill the lice. This method is becoming popular because the fowls need not be handled and their egg production disturbed.

—Seed World

## Spratt's Dog Medicines

(Price includes postage, except where noted)



|   |  |        |
|---|--|--------|
| Spratt's Cooling and Al-<br>terative Tablets—For<br>heated blood, etc.....                                    |  | \$ .60 |
| Spratt's Anti-Rickets Tab-<br>lets—A bone and mus-<br>cle builder.....  |  | .60    |
| Spratt's Bone Builder—<br>For Rickets, Osteoporo-<br>sis, etc.....  |  | .75    |
| Spratt's Choreia Tablets—<br>For Choreia, St. Vitus'<br>Dance, etc.....                                       |  | .60    |
| Spratt's Chronic Skin Di-<br>sease Tablets—For ob-<br>stinate cases of Mange and Eczema.....                  |  | .60    |
| Spratt's Caught Tablets—Generally effect a<br>quick cure.....   |  | .60    |
| Spratt's Digestive Tablets—For severe cases<br>of indigestion.....  |  | .60    |
| Spratt's Distemper Tablets—May be used as<br>a preventive.....  |  | 1.00   |
| Spratt's Ear Canker Ointment—For both in-<br>ternal and external form of this disease.....                    |  | .75    |
| Spratt's Eczema and Sarcocytic Mange Medi-<br>cine.....   |  | .60    |
| Spratt's Flea Powder—Aids in removing<br>certain parasites from dogs, cats and other<br>animals. Per tin..... |  | .30    |
| Spratt's Jaundice Tablets—Valuable in treat-<br>ing "Yellows," etc.....                                       |  | .60    |
| Spratt's Kidney Tablets—For Cystitis or In-<br>flammation of the Bladder, etc.....                            |  | .60    |
| Spratt's Liver Tablets—A safe and reliable<br>remedy.....   |  | .60    |
| Spratt's Mange Medicine.....  |  | .75    |
| Spratt's Tonic and Condition Tablets—To<br>build up after sickness and to put in bench<br>show form, etc..... |  | .60    |
| Spratt's Worm Capsules for Dogs—An expel-<br>lent of Round, Maw, and Tape-Worms.....                          |  | .60    |

|  |  |     |
|--|--|-----|
| Spratt's Worm Capsules for Puppies—May<br>be given with perfect safety to puppies<br>from six weeks old to six months..... |  | :60 |
| Spratt's Tonic and Condition Tablets for<br>Toy Dogs and Puppies.....  |  | .60 |
| Spratt's Distemper Tablets for Toy Dogs and<br>Puppies.....  |  | .75 |

### SPRATT'S DOG FOODS

|                                |  |     |
|--------------------------------|--|-----|
| Dog Biscuit, in bulk, 1lb..... |  | 17c |
| Puppy Cakes, cartons.....      |  | 45c |
| FIBO, cartons.....             |  | 20c |
| CHARCOAL OVALS, bulk.....      |  | 20c |
| COD LIVER OIL BISCUITS.....    |  | 50c |
| CALO.....                      |  | 15c |
| PEDIGREE BLANKS for dogs.....  |  | 10c |

Soaps, Chains, Leads, Collars and Harness.

### FISH OIL SOAP

For Aphis and all insects which suck. This soap dissolved 3 oz. in 1 gallon of warm water is very effective. About 3-4 lb. package, ea. 25c; postpaid, 30c.

## Insecticides, Bordeaux, Etc.

### BORDEAUX MIXTURE

Used principally for Mildew, Blight and Fun-  
gus Diseases of all kinds. Half lb. 25c; postpaid,  
30c; 1 lb., 40; postpaid, 45c; 4 lbs., \$1.40

### MAGGOTBATE

For use on all root crops for root maggots.  
2 lb. cartons..... 25c



### CARCA WILL PREVENT ROOT MAGGOT

A wonderfully effective spray for destroying  
Grubs, Maggots and Worms which infect TUR-  
NIPS, RADISHES, BEETS, CAULIFLOWERS,  
CABBAGE, ONIONS, Etc., and highly recommend-  
ed for use in combatting CROWN BORERS in  
strawberries. The root maggot, as well as the  
strawberry crown borer, is hatched from an egg  
deposited on the plants by the maggot fly. This  
fly dislikes the odor of the spray, and will not de-  
posit the eggs where the odor is present. Carco  
is highly recommended by market gardeners and  
large growers of vegetables. Is sure death to  
ants. Half pint, 50c; pint, 75c; quart, \$1.25; gal.  
\$2.75.

### ARSENATE OF LEAD

Arsenate of Lead—Half lb. pkg., 20c; one lb. 30c.

### TOBACCO DUST

For dusting plants affected with Aphis; also  
used on squash vines and melons. 1 lb., 15c;  
postpaid, 20c; 5 lbs., 75c; postpaid, 90c.

### BLACK LEAF "40"

A Concentrated Solution of Nicotine  
For the convenient information of  
those desiring to use "Black Leaf 40"  
the following suggestions are made:

Against sucking insects, such as Green  
and Woolly Aphis, Pear Psylla, Grape  
Leaf Hopper, Pear Thrips, etc., 1 part  
"Black Leaf 40" to about 900 to 1000  
parts water.

Against more resistant plant lice,  
such as Black Aphis and Rosy Apple  
Aphis, 1 part "Black Leaf 40" to about  
500 to 700 parts water.

Price, 1 oz. bottle, 35c; half lb. tin, \$1.25; 2 lb.  
tin, \$3.50; 10 lb. tin, \$13.50. Not mailable.





# Insecticides and Plant Remedies

## Slug Shot (Hammond's)

A light non-poisonous composite, fine powder for killing Potato Bugs, Currant and Cabbage Worms, Green and Black Fly. Beetles and Caterpillars. Full directions on each package. 1 lb. perforated box, 25c; postpaid, 30c; 5 lbs., 75c; postpaid, 90c.

Ant Killer, per can.....50c

## Poison Gas Balls

Exterminates Ground Squirrels, Pocket Gophers, Prairie Dogs  
NON-EXPLOSIVE

No Danger of Killing Stock or Game Birds  
Light the ball and drop it in the hole. The burning ball creates a gas heavier than air. It gets the whole family. Each 2½c; 100, \$2.00; 500, \$8.00. Weight, 75 lbs, per 1000.

## Semesan Semesan Jr. Semesan Bel

THE PREMIER SEED DISINFECTANTS  
Control Diseases, Increase Yields, Improve Quality

**SEMESAN**—This disinfectant can be applied in either the liquid or convenient dust form to prevent or control effectively a most diversified variety of parasitic diseases and fungoid growths borne by seeds, seed pieces, plants, grafts and soils. Semesan is harmless to seed and plant life but extremely poisonous to disease and fungous organisms. It hastens germination, produces sturdier plants, promotes earlier maturity and increases both the quantity and quality of crop yields.

**SEMESAN JR.**—A less expensive but equally effective form of Semesan for the dry dust disinfection of both field and sweet corn seeds against the ear, root and stalk rots.

**SEMESAN BEL**—Applied to whole or cut seed potatoes, either as a dry powder or a whitewash-like water mixture. Semesan Bel will prevent or control the common seed-borne potato diseases.

PRICES FOR DU PONT  
SEMESAN

|                  |                    |                   |
|------------------|--------------------|-------------------|
| 2 ozs.....\$ .50 | 5 lbs.....\$ 13.00 | 1 lb.....\$ 1.75  |
| 8 ozs..... 1.60  | 25 lbs..... 62.50  | 5 lbs..... 8.00   |
| 1 lb..... 2.75   | 50 lbs.....122.50  | 25 lbs..... 37.50 |

Free Descriptive Booklet Sent Upon Request



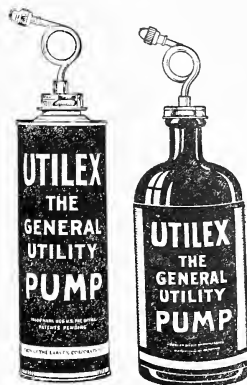
## Evergreen Spray

Non-Poisonous Remedy for Aphids. This is one of the most valuable of recent introductions, giving us a safe remedy for that most difficult pest, the aphid or plant louse. Useful against plant lice, rose beetle, red spider, squash beetles, cabbage worms, cut worms, potato bugs, and all similar pests. Can be sent by mail, 1½-oz. bottle makes 6 to 9 gallons of spray, 35c here or 40c, postpaid. 6 ozs. make 30 to 35 gallons, \$1.00 here or \$1.10, postpaid.

Larger sizes quoted on request.

## Utilex Spray Pumps

Utilex is an all brass pump which fits into either of two containers, tin or glass, both of which are illustrated here. The pump may be adjusted entirely by hand (see directions in attached circular) to eject a solid stream or it may be used as an atomizer to give a fine mist-like spray. Since the pump portion is made entirely of brass there is no danger of rust or corrosion.



To operate, insert the forefinger into loop of the plunger. Hold the container in the other hand. Pull container down—this will fill the pump with liquid. Push container up—this will eject the liquid as a fine mist or a solid stream according to the nozzle adjustment. Continuous repetition of these motions will maintain a steady spray or stream.

As the name indicates, "Utilex, the General Utility Pump" may be put to many other uses around the home, greenhouse and hotbeds in addition to that of applying liquid spray.

PRICE \$1.00, Postpaid.

## The Cyclone

Saves Valuable Seed by Even Distribution



Uneven seeding is wasteful. The cyclone will sow many acres per hour and any amount per acre. Does the work quickly. Saves labor. It has been a success for more than 40 years. Many hundreds of thousands of farmers in America, Canada, Europe and other countries have long relied on it for sowing clover, timothy, alfalfa, oats, wheat or any other seed that is sown broadcast.

**Construction**—Its well known Double Feed insures a uniform flow of seed. Slope Feed Board keeps hopper properly filled. Feed Adjustment is automatic and starts or stops flow of seed instantly. Distributing Wheel scatters seed evenly. Throws equal amounts to equal distances on each side of operator. PRICE \$2.25

## Key Brand Ant Killer

A powder that will positively kill ants.

Price \$1.00



# Milot-Mills Lawn Grass Mixture

*Kentucky Blue Grass and  
White Dutch Clover*

One Pound to 300 Square Feet

Lawn Grass Mixture  
Per Pound..... **60c**

White Dutch Clover  
Per Pound..... **60c**

Shady Place Mixture  
Per Pound..... **60c**

Rhode Island Bent  
Per Pound..... **1.50**

*See Chelan County Court House Lawn*

## Vegetable Collection, 1929, Post Paid \$1.50.

- 1 Pound American Wonder Peas.
- 1 Pound Stringless G. P. Beans.
- 1 Pound Golden Bantam Corn.
- 1 Ounce Danvers H. Long Carrot.
- 1 Ounce Yellow Globe Danvers Onion.
- 1 Ounce Lettuce, Hansen Head.
- 1 Ounce Radish, Scarlet Globe.
- 1 Packet Hubbard Squash. 2 Ounces Beets
- 1 Packet Long Green Cucumber.
- 1 Packet Early Cabbage.
- 1 Packet Tomato, Bonny Best.

## Special Flower Seed Collec- tion for 50c---Post Paid

- 1 Packet Mixed Sweet Peas.
- 1 Packet California Poppy.
- 1 Packet Cosmos.
- 1 Packet Nasturtium.
- 1 Packet Mixed Zinnia.
- 1 Packet Mixed Petunia.
- 1 Packet Tall Marigold.
- 1 Packet Morning Glory.

Our Assortment of Bird Cages, Cage  
Stands and Bird Supplies is the Most Com-  
plete in North Central Washington.

## FLOWERS BY TELEGRAPH Through the Florists Telegraph Delivery Association HOW IT IS DONE

Parties desiring flowers delivered to friends or relatives in any part of the world, where ever there may be a commercial florist, may have them delivered at once or whenever desired by giving the correct address, specifying the choice of Flowers, Basket, Spray or Funeral Piece, Etc. wanted and the amount they wish to pay, plus the cost of telegram and delivery charge, in case the flowers must be sent to a nearby town where no florist is located.

All members of the Florists Telegraph Delivery Association are supplied each month with a complete list and address of all members in good standing, thereby insuring the customer a sure and prompt delivery, provided the correct address has been given. Should the party for whom the flowers were ordered cannot be found, your florist is notified and your money refunded, less the cost of telegrams.

Another book is in the possession of the florist which gives the names and location of almost every city and hamlet in the United States and several other countries, stating whether or not there is a florist there. If not, the name of the nearest city to which an order may be sent and the flowers forwarded by Parcels Post, Express or Stage—the cost of which is deducted from the total amount of your order. Your card, of course, to accompany every package.

If order is to be delivered the next day or thereafter, we advise a night letter of 50 words which is cheaper and allows the florist to fully explain your order and include any message you may wish to send. Night letter rates east of Chicago, \$1.20; west of Chicago and east of Rocky Mountains, 90c; Portland, 48c; Spokane and Seattle, 30c. Every day we receive orders for delivery at home and for delivery elsewhere.

Look for the Sign—"F. T. D." on your Florist's Window.

MILOT-MILLS, Florists